

David A. Rubin, ASLA, FAAR

Principal, DAVID RUBIN Land Collective

ASLA Council of Fellows Nomination: WORKS

EDUCATION

Master of Landscape Architecture,
Harvard University, 1990

Bachelor of Arts in Fine Arts
and History of Art, Connecticut
College, 1985

EXPERIENCE

2012–Present

Principal and Founder,
DAVID RUBIN Land Collective

2005–2012

Equity Partner, Olin

1994–2005

Associate, Olin Partnership

1990–1993

Landscape Architect,
Hanna/Olin

1988–1990

Intern, Child Associates, Inc.

HONORS + AWARDS

INDIVIDUAL HONORS

2011–2012 Rome Prize,
American Academy in Rome

INSTITUTIONAL HONORS

(while partner at Olin)

**2008 Cooper-Hewitt National
Design Award in Landscape
Architecture,** The Smithsonian

2006 Firm Award, ASLA

NATIONAL PROJECT AWARDS

**2015 Open Space Award
Finalist,** Urban Land Institute,
Canal Park

2015 Trend Award, Urban Land
Institute, Canal Park

2015 Honor Award, AIA,
California Memorial Stadium

2013 Honor Award, SCUP/AIA
Committee on Architecture for
Education, California Memorial
Stadium

On behalf of the Executive Committee of the Pennsylvania-Delaware Chapter of the ASLA, it is my privilege to nominate David A. Rubin, ASLA, for your consideration.

Executive Summary: Throughout his twenty-seven years in practice, David A. Rubin's work has centered on the notion that innovation is achieved through collaboration, and that demonstrable leadership and the synthesis of multiple disciplines result in design excellence. With degrees from Harvard University and Connecticut College, David began his career in 1990 at Hanna/Olin (later Olin Partnership and Olin), where he became the youngest associate and principal to date, and eventually served as equity partner for seven years. His emphasis on creating beautifully designed, intimate spaces through collaborative design significantly expanded Olin's portfolio and positioned the studio as a leading firm in the field—and helped shift its role to prime consultancy on a majority of projects.

In 2012, following his tenure as 2011–2012 Rome Prize Fellow, David began his own practice with DAVID RUBIN Land Collective, where he has continued to broaden the inquiry into how, through the design of publicly accessible spaces, the human condition can be influenced in positive, equitable ways. At the heart of the 12-person studio's mission is an “empathy-driven” design process that embraces the collective consciousness to form landscapes that create connection between individuals. David's empathetic approach extends beyond drawing and ideating, and includes a design process that engages communities, clients, and stakeholders in active listening, collaboration, and consensus-building. Under David's leadership, the studio, which is prime consultant on 60% of its projects, has become renowned for its inventive approaches to public engagement and outreach, offering joyful visions for the future while being sensitive to the inclusion of diverse communities.

Beyond his award-winning project work as a landscape architect, David has been a visible leader, educator, and advocate for the profession. He has served on advisory panels including the ASLA Annual Meeting Education Advisory Committee, Mayors' Institute on City Design, and Baltimore Urban Design & Architectural Review Panel. He has also shared his knowledge and enthusiasm in top-rated presentations at regional and national ASLA meetings and other conferences; served as lecturer and critic to a number of graduate and undergraduate programs; and led award-winning option studios at Harvard.

David's work encompasses diverse typologies—arts-centered institutional work, urban streetscapes, plazas, parks, and planning projects, as well as infrastructure—and throughout decades of practice, his energetic and authentic approach has celebrated and facilitated human connection and experience through landscape. He is an inspiring credit to the field.

In the design of The Commonground, Sky Farm, and Wellness Trail guidelines at Eskenazi Health Hospital, David created landscapes that are places of social connection, wellness, beauty and inspiration. David is far more than just a designer—he has been a remarkable advocate for our project. David enthusiastically met with community leaders, philanthropists, elected officials and stakeholders to articulate the importance our project and his designs. His passion is infectious and his vision is exhilarating.

Matthew R. Gutwein
President & CEO
Health & Hospital Corp.
Marion County, IN

David A. Rubin, ASLA, FAAR

2012 Award of Merit,

Illuminating Engineering Society of North America, Lenfest Plaza

2007 Honor Award, AIA,

Memorial to the Murdered Jews of Europe

2007 International Urban

Landscape Award Finalist,

Memorial to the Murdered Jews of Europe

2006 Urban Design Award,

Royal Architecture Institute of Canada, University Boulevard at the University of British Columbia

2006 Honor Award for Regional and Urban Design, AIA,

University Boulevard at the University of British Columbia

2005 Grand Award for

Engineering Excellence,

American Council of Engineering Companies, Massachusetts Institute of Technology Stata Center

2003 Merit Award, ASLA,

Church of Jesus Christ of Latter Day Saints Conference Center

2003 Award of Excellence, Green

Roofs for Healthy Cities, Church of Jesus Christ of Latter Day Saints Conference Center

REGIONAL PROJECT AWARDS

2017 Willard G. Rouse III

Award for Excellence, Urban

Land Institute Philadelphia, Pennovation Works

2017 Grand Jury Award,

Preservation Alliance for Greater Philadelphia, Pennovation Works

2017 Merit Award, AIA

Philadelphia, Pennovation Works

2017 Community Impact Award,

CREW Phila., Pennovation Works

2017 Monumental Award,

Indianapolis Chamber of Commerce, Cummins DBU HQ

2017 Honor Award, AIA Indiana,
Cummins DBU HQ

Exceptional accomplishments in planning and design over time

David's accomplishments are defined both by how his landscapes impact places and people over time, and by his long and rich relationships with clients, communities, and collaborators. His empathy-driven approach has fostered deep connections that have been integral to the success of intricate, long-term projects, including engagements with Dart Realty/Camana Bay (21 years); JBG Smith (11 years); and Eskenazi Health Hospital (10 years), among many others.

Frequently working in areas of change and growth, David has a depth of experience designing for evolving environments and communities in flux over time. Having received the commission for DC's Canal Park, David created a design for sustainability, adaptation, and change over the long term in a growing and not yet fully realized neighborhood. The site's design evokes its history as the one-time location of the historical DC canal system while also alleviating compromised conditions faced by the neighborhood's existing residents by providing an economic driver, social connection, and neighborhood-scale green infrastructure interventions. As a result of David's thoughtful design, for the first time in a HUD-engaged project, no existing neighborhood residents were displaced—and new development in the surrounding quarter-mile neighborhood is projected to generate \$1.05 billion in tax revenue and create over 10,000 jobs by 2030.

The Commonground at Eskenazi Hospital in Indianapolis also illustrates design success over time. The project was the result of a 2009 non-election year referendum in which a historic majority of County voters approved a \$753M bond to replace the deteriorating hospital campus and facilities. David conceived of and designed The Commonground, and also served on the hospital's Art Selection Committee and as an integral part of fund-raising efforts. Since completion in 2014, the campus has proven a unique development in health care and community design, fostering a healing and productive landscape and serving as an example of what sustainable aspirations and thoughtful planning can achieve in the public realm.

David's work with Cummins, Inc. is also exemplary of his close relationships and long-term collaborations. Cummins selected David to design its new Distribution (DBU) Headquarters, continuing the company's rich history of cultivating the work of significant building and landscape architects, the likes of which include I.M. Pei, Eero & Eliel Saarinen, Dan Kiley, and Michael Van Valkenburgh. The DBU has become a place of engagement not only for Cummins employees, but for all citizens of Indianapolis. Subsequently, the company asked David to lead the landscape redesign of its Corporate Office Building (COB) in Columbus, IN, now underway. Cummins has also asked Land Collective to serve as Landscape Architect of Record for all projects, international and domestic, inviting a long future of meaningful collaboration. David's robust relationships with Cummins and other major Indiana institutions has bolstered Land Collective's recent award of the Downtown Columbus, Indiana Strategic Development Plan, and its completion of the Indiana Museum of Art Master Plan.

David embraced the vision to develop a warm and welcoming space for our employees and the Indianapolis community. Working in close collaboration with the design team, he created a place that perfectly complimented our physical structure. Beautiful to the eye, the plaza creates a connection to the office building and the city while positively impacting our environment. David's creative problem solving, collaborative spirit, and eye for detail made him an invaluable member of the team.

Marya Rose
Vice President + Chief
Administrative Officer
Cummins Inc.

David A. Rubin, ASLA, FAAR

Mastery of the art, stewardship and social responsibility of landscape architecture

In his years of practice, David's approach has demonstrated a deep understanding of the import of engaging citizenry through art, planning for good stewardship, and developing landscapes that are socially responsible. Building upon successes at Canal Park and Eskenazi Hospital, David's work in cities like Muncie, IN, and Allentown, PA, demonstrates meaningful engagement with communities to design problem-solve on their behalf. In Muncie, David's design for Kitselman Trailhead and Park (a former industrial Superfund site) was informed by public engagement and discussion with the Army Corps of Engineers, Indiana Department of Natural Resources, and Indiana Department of Environmental Management. The project will unify two communities across the White River through the relocation of a historic bridge and manipulation of topography on the brownfield site.

David's Framework Plan for Allentown, PA—the state's fastest growing city—brings together art, nature, and good stewardship in a landscape framework that elevates all citizenry. Through public outreach, David led the planning team in understanding the needs and desires of the community, and unified citizens and twenty-one city agencies in support of a plan that positively redefines the public realm. This type of planning engagement is key to David's ongoing work in urban environments such as the redesign of waterfront of Wilmington, DE, and the White River Master Plan, a 25-mile, multi-county exploration of the Indiana asset.

David's commitment to art, stewardship, and social responsibility is also apparent in advisory roles for institutions such as Pennsylvania Academy of Fine Arts and Eskenazi Health Hospital, where he helped inform all art on the campus, interior and exterior. He also recently led the master plan for the Indianapolis Museum of Art—a former Olmsted Brothers' landscape—with a constellation of assets across 300+ acres, including the iconic Miller House by Saarinen and properties on the National Register of Historic Landmarks. The master plan explores the strategic direction of all assets, and finds ways that the institution can better integrate art and nature, interior and exterior, sustainably and equitably.

Recognized quality + significant impact

David's outstanding and impactful work has been recognized with numerous honors and awards, including the 2011–2012 Rome Prize. Recognition for his projects includes the AIA National Honor Award for California Memorial Stadium; the Trend Award from the Urban Land Institute for Canal Park, which also received the Presidential Citation for Sustainable Design and was one of six finalists for the ULI Open Space Award; and the Willard G. Rouse III Award for Excellence from Urban Land Institute Philadelphia for Pennovation; among many others. While at Olin, David's honors also included the ASLA Firm Award and the Cooper Hewitt National Design Award in Landscape Architecture. Beyond local, national, and international awards, David's work has also been extensively recognized in media, including the recent naming of Pennovation as one of "25 Masterpieces that Prove 2016 was an Incredible Year for Architecture" by *Wired*; one of the "10 Most Innovative Architectural Projects of 2016" by *Redshift*; and one of "The Coolest Workspaces of 2016" by *Fast Company*.

David's creative design leadership provided the critical formal and conceptual framework for the stadium and southeast campus projects. David was a strong advocate for the public realm—recognizing that landscape, circulation, plazas and spaces-between-buildings would be the defining features of the project. His thoughtful design responsiveness was particularly impressive considering that changes in funding (and budget) occurred several times throughout the project. David rolled up his sleeves and moved us forward each time.

Emily Marthinsen
Campus Architect
University of California,
Berkeley

2017 Merit Award, AIA New York State, Cummins DBU HQ

2017 Merit Award, AIA New York, Cummins DBU HQ

2014 Merit Award, AIA Connecticut, Yale University School of Management

2014 Monumental Award, Indianapolis Chamber of Commerce, The Commonground at Eskenazi Health Hospital

2014 Merit Award, American Institute of Architects St. Louis, The Commonground at Eskenazi Health Hospital

2014 Legacy Project Award, The Commonground at Eskenazi Health Hospital

2013 Presidential Citation for Sustainable Design, AIA DC, Canal Park

2013 Merit Award, AIA DC, Canal Park

2013 Biennial Award for Design Excellence, Berkeley Design Advocates, California Memorial Stadium

2013 Sports Venue Award, AIA Kansas City, California Memorial Stadium

2012 Merit Award, Unbuilt Category, AIA Philadelphia, Temple University 20/20 Campus Development Plan

2010 Governor's Award, His Excellency the Governor of the Cayman Islands, Camana Bay Town Center

2006 Design Honor Award, ASLA PA-Delaware Chapter, Massachusetts Institute of Technology, Stata Center

2005 Gold Award for Sustainable Site Design, American Council of Engineering Companies of Massachusetts, Massachusetts Institute of Technology, Stata Center

David A. Rubin, ASLA, FAAR

PROFESSIONAL LEADERSHIP ACTIVITIES

ASLA

2015–2018, ASLA Annual Meeting Education Advisory Committee (AMEAC), Member
2017, ASLA Annual Meeting, Presenter (Four Sessions)
2017, ASLA Southeast Regional Conference, Keynote Speaker
2017, ASLA Ohio Chapter Annual Meeting, Keynote Speaker
2016, ASLA Annual Meeting, Presenter (Three Sessions)
2016, ASLA Washington State Conference, Keynote Speaker
2016, ASLA Georgia Chapter, Frederick Law Olmsted Lecturer
2015, ASLA Annual Meeting, Presenter (Four Sessions)
2015, ASLA Oregon State Conference, John Yeon Center Inaugural Doug Macy Lecture, Keynote Speaker
2014, ASLA Annual Meeting, Presenter (Two Sessions)
2013, ASLA Annual Meeting, Presenter (One Session)
2010, ASLA Annual Meeting, Presenter (One Session)

BOARD + ADVISORY PANELS

2014–2017, City of Baltimore Urban Design & Architectural Review Panel, Member
2013–Present, Pennsylvania State University Stuckeman School Advisory Board, Member
2013–2016, American Academy in Rome Society of Fellows, Council Member and Treasurer

VISITING PROFESSOR

2018, Harvard Graduate School of Design, Option Studio: Manila
2017, Harvard Graduate School of Design, Option Studio: Kuala Lumpur

Select Work: *David was design principal and lead landscape architect for all select work.*

The Commonground at Eskenazi Health Hospital (Indianapolis, IN, 2014)

Awards: *Monumental Award, Indianapolis Chamber; Merit Award, AIA St. Louis; Legacy Project Award*

The Commonground, a 1.5-acre plaza within the 10+ acre campus of Eskenazi Hospital, allows healing to begin the moment one crosses the threshold to the campus rather than when one enters the clinic building. The plaza includes contemplative spaces centered on the sounds and micro-climate of water; nutritionally-rich slow food in a farmers' market and local-fare café; a site informed by renowned local and national artists; and regionally identifiable landscape attributes. The Commonground embraces *mens sana in corpore sano*, with a productive rooftop Sky Farm, where each year more than 3,000 pounds of food is grown for the hospital. David's work with Eskenazi also included the establishment of guidelines for future growth, including the creation of a Wellness Trail linking downtown Indianapolis' Cultural Trail with the White River Greenway through the Wellness District. Offering opportunities for engagement and program in the context of a high level of design, The Commonground is a draw for all in the Indianapolis area, whether seeking Eskenazi's services or not.

Pennovation Works Campus at The University of Pennsylvania (Philadelphia, PA, 2016)

Awards: *Willard G. Rouse III Award for Excellence, Urban Land Institute Philadelphia; Merit Award, AIA Philadelphia; Community Impact Award, CREW Philadelphia; Best Adaptive Reuse Project, Curbed Philadelphia; Outstanding Structural Engineering Project, Delaware Valley Association of Structural Engineers; Best of Design, Hon. Mention, Architect's Newspaper*

Part of a 3,700-acre riverfront redevelopment zone between the University of Pennsylvania and the Philadelphia Navy Yard, the 23-acre Pennovation Works campus has transformed a former industrial site along the Schuylkill River into one of the City's key innovation incubators. David's design created an environment that brings together professionals and researchers from wide-ranging disciplines such as robotics, cyber physical systems, and economics. A generous plaza and landscape incorporates green infrastructure, and an existing lawn is transformed into a wildflower meadow and native planting. Within the landscape is an outdoor "drone cage" with netting that enables the testing of high performance aerial and ground robots. The design accounts for future development while creating meaningful places on campus in the short-term.

Cummins, Inc. Distribution (DBU) Headquarters (Indianapolis, IN, 2017)

Awards: *Merit Award, AIA New York State; Merit Award, AIA New York; 2017 Honor Award, AIA Indiana; Monumental Award, Indianapolis Chamber of Commerce; Best of Design, Honorable Mention, Architect's Newspaper*

Cummins selected David without competition to design the landscape of its Indianapolis Distribution Headquarters. Focusing on opportunities to bring Cummins' talent outdoors as working groups and individuals, the park/plaza design allows people to gather in a

As recipient of the commission and design lead, David was adept at creating a strong vision for public space that was inclusive of stakeholder voices and inviting to all members of our diverse community. The success of Canal Park is in its social sustainability. Because of David's ability to direct a large design team through a complex design process, the project was able to implement sustainable systems that gain renown for the park, but also help maintain sustainable funding structures.

Janet Weston
Manager
Canal Park

David A. Rubin, ASLA, FAAR

2011, University of Virginia
School of Architecture

2010, Southern California Institute
of Architecture (SCI-Arc)

2003–2006, The Arboretum
School of the Barnes Foundation

2002, University of Pennsylvania
School of Design

1990, Harvard Graduate School of
Design, Career Discovery

VISITING CRITIC

2006, University of Virginia
School of Architecture

2006, University of Pennsylvania
School of Design

2005, Harvard Graduate School of
Design

2003–2008, University of
Pennsylvania School of Design,
Portfolio Workshop

1995, University of Pennsylvania
School of Design, 3rd Year Studio

VISITING LECTURER (SELECTED)

2017, Lehigh University

2017, University of Pennsylvania

2016, Colorado State University

2016, Cornell University

2016, University of Pennsylvania

2014, Ball State University

2014, Virginia Tech

2013, Yale University

KEYNOTES (SELECTED)

2017, Mayors' Institute on City
Design, West Session

2017, University of Minnesota
School of Design, Commencement

2016, Mayors' Institute on City
Design, National Session 64:
Oakland, CA

2014, Arts Council of Indianapolis
Start With Art Conference

2013, Mayors' Institute on City
Design, National Session 55: New
Orleans, LA

variety of environments, including a small amphitheater for events at the plaza center, an electronics-friendly harvest table, and intimate spaces for thoughtful meditation. Pavement patterning is inspired by DBP's "calibrated" building façade. Horticulture is lush, regionally appropriate, and maintainable. Although privately held, the site is publicly accessible, an inviting urban amenity for citizens and visitors.

California Memorial Stadium, University of California (Berkeley, CA, 2012)

Awards: National Honor Award, AIA; Honor Award, Society for College and University Planning / AIA Committee on Architecture for Education; Sports Venue Award, AIA Kansas City; Biennial Award for Design Excellence, Berkeley Design Advocates; Best Sports/Entertainment Project, Engineering News-Record; Excellence in Structural Engineering, Landmarks, Structural Engineers Association of Northern California; Excellence in Structural Engineering, Structural Engineers Association of California

In conjunction with Memorial Stadium's seismic and accessibility renovation, David led the University of California, Berkeley, in creating a bold landscape-based gesture for California Memorial Stadium and its plaza. The new facility was cited in an area of parking and, under David's initiative, pushed down into the earth to take advantage of the significant 145-foot topographic change and create an iconic plaza on the facility's roof, serving intimate gatherings throughout the year and 65,000 people on game days. Informed by John Dixon Hunt's writings on "The Three Natures," where proximity to culture is defined in the landscape through refinement and rustication, a palette of stone and concrete changes character as one approaches the Stadium from Piedmont Avenue, and entry sequences into the Memorial are now of a character befitting the site.

Canal Park (Washington, D.C., 2012)

Awards: Trend Award, Urban Land Institute; Open Space Award Finalist (one of six internationally), Urban Land Institute; Presidential Citation for Sustainable Design, AIA DC; Merit Award, AIA DC

With the commission for Canal Park, David succeeded in creating one of the nation's most sustainable public assets, transforming a former brownfield into a vibrant gathering place and economic catalyst. One of the first parks built as part of the Anacostia Waterfront Initiative, it is a neighborhood identifier and a regional draw. More so, the park is as a model of sustainable design and green infrastructure strategies, with SITES™ 3-star and LEED® Gold certifications. This was achieved by David convincing the District to allow the stormwater collection system to expand beyond the park and into the adjacent neighborhood, thereby capturing up to 1.5 million gallons of rainfall and preventing it from entering into an already over-taxed combined stormwater/sewer system. The cleansing process is so thorough greywater can be reused not only for irrigation and toilet flushing, but also to top off the human-engaged fountains, allowing the neighborhood park to help solve a regional issue. Canal Park allows visitors to enjoy re-established natural habitats while providing social connection, economic stimulus, and environmental protection for the area.

Summary by Chapter President: David's candidacy for the Council of Fellows is distinguished by his extensive accomplishments in planning and designing significant landscapes all over the world; his mastery of art, stewardship, and social responsibility in developing and enacting an "empathy-driven" approach to landscape architecture; and the notable recognition, honors, and awards his work has received. David's work is innovative and inclusive, and exemplar of successful leadership and collaboration at every scale. I am pleased to offer my wholehearted recommendation for his election to the Council of Fellows.

Sincerely:

Richard P. Rauso, RLA, ASLA,
Pennsylvania-Delaware Chapter, Executive Committee, ASLA



Rubin Image 01
The Commonground at Eskenazi Health Hospital: Indianapolis, IN

The Commonground embraces the concept of *mens sana in corpore sano* (sound mind, sound body) with contemplative spaces and a productive rooftop garden. The plaza's central framework is a sculptural trellis embracing a café and bookended by two fountains—offering patients, caregivers, and visitors space for rest, rejuvenation, and healing.



Rubin Image 02
The Commonground at Eskenazi Health Hospital: Indianapolis, IN

The central lawn's trellis defines four garden "rooms," each with its own unique horticulture of climbing vines. In summer months, a weekly farmer's market is held in the paved areas, and health-oriented programming, including free yoga, is offered on the lawn.



Rubin Image 03
The Commonground at Eskenazi Health Hospital: Indianapolis, IN

Among the defining features of The Commonground is *Healing Waters*, a CNC-routed skim fountain free of barriers and open to bare feet and wheelchairs. The fountain is a daily summer destination for the nearby preschool, providing joyful entertainment not only to the children but also to patients observing from above.



Rubin Image 04
The Commonground at Eskenazi Health Hospital: Indianapolis, IN

A living water feature, *The Falls* offers respite and soothing sounds among a grove of Kentucky Coffee trees, a Rubin signature plant. Seen behind a philanthropist dinner, the fountain is open year-round, with ice forming over the rushes and native Indiana limestone still expressive of its extraction from the quarry.



Rubin Image 05
The Commonground at Eskenazi Health Hospital: Indianapolis, IN

A significant client goal was to design a destination for the citizens of Indianapolis, whether seeking hospital services or not. The Commonground has become a cultural venue for the surrounding population and a draw for programming beyond healing, with engagement throughout the year.



Rubin Image 06
Pennovation Works at the University of Pennsylvania: Philadelphia, PA

David's landscape for Pennovation Works—a unique blend of offices, labs, and inventive production spaces—draws on binary code and bold graphics. The campus design allows new parcels, like the flying robot cage at right, to be positioned at an angle where vistas always reinforce the plaza as the center of campus.



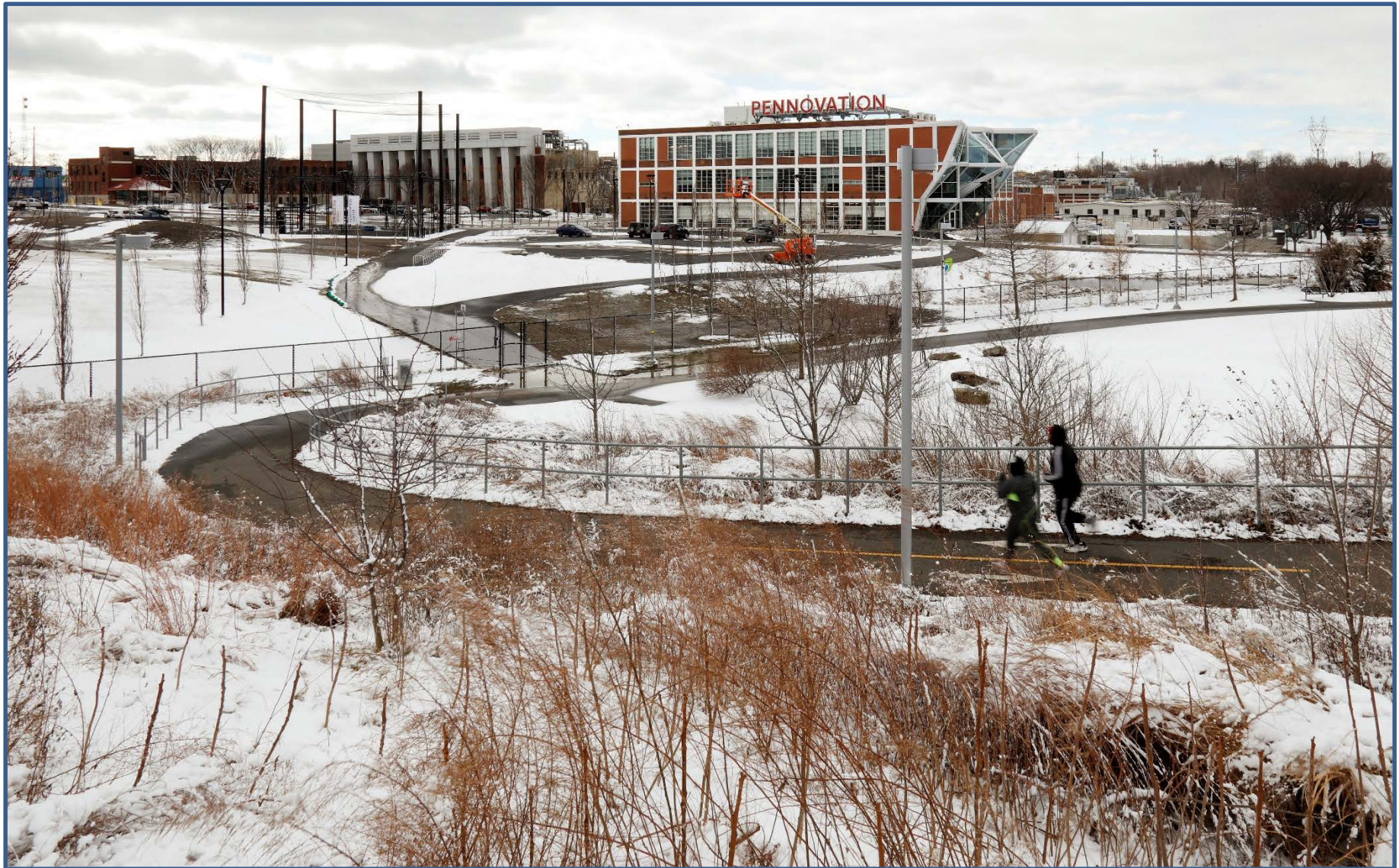
Rubin Image 07
Pennovation Works at the University of Pennsylvania: Philadelphia, PA

The main entrance of the Pennovation Center responds to David's bold chevron paving, which directionally moves pedestrians toward and through the building and embraces the inventive energy at the heart of Penn's "innovation campus." "Binary code" patterns and industrial signage celebrate the site's dynamism as well as its history.



Rubin Image 08
Pennovation Works at the University of Pennsylvania: Philadelphia, PA

This co-working campus landscape supports a diversity of users—from students and professors to designers, engineers, and entrepreneurs—with activities ranging from dog training to drone testing to software development. Pockets of social space invite serendipitous encounters, while large expanses of paving provide room for experiments and flexible programming.



Rubin Image 09
Pennovation Works at the University of Pennsylvania: Philadelphia, PA

David was instrumental in convincing the architect to face Pennovation Center's faceted façade toward the University's main campus. This orientation provides striking views from Center City, I-95, and the Amtrak train corridor, with Pennovation's explosive facade appearing as a manifestation of the ground-breaking ideas that emanate from the campus itself.



Rubin Image 10
Cummins, Inc. Distribution (DBU) Headquarters: Indianapolis, IN

David's landscape for Cummins' new Distribution Headquarters introduces a publicly accessible plaza made up of a series of "neighborhoods" that create opportunities for the company to bring work outdoors while also welcoming public visitors traversing along the connected Indianapolis Cultural Trail, an 8-mile bike and pedestrian network.



Rubin Image 11
Cummins, Inc. Distribution (DBU) Headquarters: Indianapolis, IN

The plaza's paving patterning was influenced by Deborah Berke Partners' "calibrated" building façade, which itself was inspired by the very diesel engines that Cummins manufactures. Planted swales create opportunities for infiltration, with cleansed water collected in an underground cistern for irrigation.



Rubin Image 12
Cummins, Inc. Distribution (DBU) Headquarters: Indianapolis, IN

The amphitheater provides opportunity for Cummins to bring its talent outdoors, with adaptable space for work and performance mirroring the interior flexibility of Cummins' collaborative environment. At the western edge of the plaza, a high-tech harvest table provides electricity and Wi-Fi connectivity to employees and public visitors alike.



Rubin Image 13
California Memorial Stadium at the University of California, Berkeley: Berkeley, CA

California Memorial Stadium reflects the “Three Natures” of landscape, transitioning from rough-hewn Rhyolite wall at Olmsted’s Piedmont Avenue to the refined board-formed concrete Beaux-Arts façade of the stadium. The project bridges nearly 145 feet in grade change across the site, with a training facility located below the landscape over structure.



Rubin Image 14
California Memorial Stadium at the University of California, Berkeley: Berkeley, CA

Visitors who forgo the grand staircase into the Stadium are rewarded with a lush, meandering pathway through the hillside and the “sacred grove” of California Oak. This ADA-accessible pathway displays local plants and celebrates the Berkeley hillside's microclimates while offering views outward toward San Francisco Bay.



Rubin Image 15
California Memorial Stadium at the University of California, Berkeley: Berkeley, CA

Spaces of respite along the edge of the rooftop promontory overlook Olmsted's Piedmont Avenue, as well as borrowed views of Berkeley and San Francisco Bay beyond. The rooftop plaza accommodates small gatherings on a daily basis and intense traffic—up to 65,000 people—on game days.



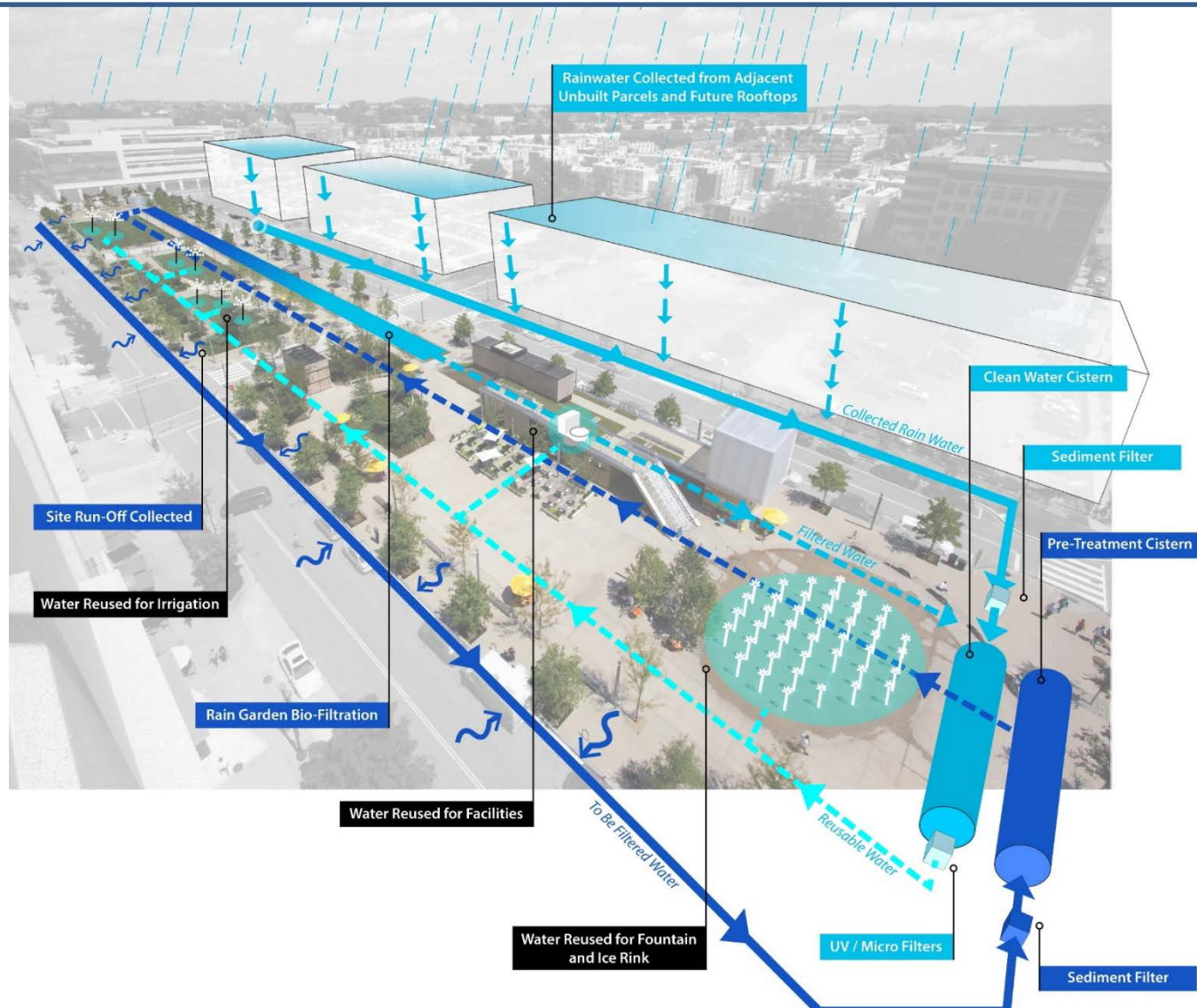
Rubin Image 16
Canal Park: Washington, DC

David's design for Canal Park creates a place of joy and exchange for people from all walks of life, every background, age, and socioeconomic status. The project revived a former bus depot and brownfield site into a gathering place for existing and new residents of both market- and worker-rate housing.



Rubin Image 17
Canal Park: Washington, DC

David's vision for the park's three pavilions recall canal barges and floating lanterns. One overlooks the linear skating loop, inspired by David's youth spent skating on frozen waterways in Ottawa. The rink hosted nearly 20,000 visitors in its first four months of operation; attendance has grown each year.



Rubin Image 18
Canal Park: Washington, DC

Canal Park is a beautiful machine of social and ecological sustainability. In addition to 28-geothermal wells and electric car-charging stations, the stormwater management system reaches out into the neighborhood to capture 1.5 million gallons and bring it into the park for cleansing and re-use, including topping off human-engaged fountains.



Rubin Image 19
Canal Park: Washington, DC

In response to David's narrative for the park, a trio of playful sculptures by David Hess stitches together the three-block site. A children's free play area surrounded on three sides by fixed seating made from sustainably harvested American Black Locust allows flexible play and observation within the larger park experience.



Rubin Image 20
Canal Park: Washington, DC

The second of three pavilions, manufactured in American Black Locust from David's conception, hovers over a skim fountain as if a barge moving through canal locks. The invention creates a space for active child play, a stage for theatrical and musical performances, and storage for play elements and fountain equipment.

David Hocker, ASLA

President and Founding Partner, Hocker Design Group

ASLA Council of Fellows Nomination: Works Category

EDUCATION

Bachelor of Landscape
Architecture, Texas A&M
University, 2001, College
Station, Texas

HONORS AND AWARDS

National Awards

2016, November, ASLA
Honor Award, General Design
Category - The Power Station

2016, August, Architizer
A+Awards Finalist,
Landscape: Private Gardens
- Cedar Creek

2016, April, American
Architecture Prize Silver:
Gardens - Cedar Creek

2016, April, American
Architecture Prize Bronze:
Gardens - The Power Station

2015, October, ASLA Award
of Excellence, Residential
Design - Cedar Creek

2014, September, The James
Rose Center Suburbia
Transformed 3.0 Selected
Project - Brookhollow

2014, April, ASLA
Professional Awards Jury
Member

2010, October, ASLA Honor
Award, Residential Design -
The Power House

2010, October, ASLA Honor
Award, Residential Design -
The Pool House

Regional/Local Awards

2017, April, Texas ASLA Merit
Award - DMA Eagle Family
Plaza

2017, April, Texas ASLA Merit

On behalf of the Executive Committee of the Texas Chapter, it is my privilege to nominate David Lennox Hocker, ASLA, for your consideration for induction into the ASLA Council of Fellows. David has made a sustained name for himself and his firm, Hocker Design Group (HDG), in the brief time since its inception in late 2004. His work has become known for a unique use of materials, particularly recycled and regionally sensitive, in unexpected and precisely-executed ways. He has a keen sense of scaled relationships and construction detailing, both of which are apparent in his firm's built work. Subsequently, the spaces created through HDG's designs enjoy active use by the people for whom they are designed. David's dedication to design detail and execution have earned his firm over 30 design awards, including four National ASLA awards. The significant achievements achieved by David through his built works provide the foundation for his elevation to the Council of Fellows.

David attributes much of his design inspiration to life experiences and travel. From his childhood experiences on his family's Texas farm to a teenage landscape business, his broad knowledge of plant material, its proper use, and maintenance provided the basis for much of his planting design vocabulary today. While studying at Texas A&M University, he spent 2 years in Castiglione Fiorentino, Italy. This introduced David to the "master builder" concept of the Renaissance and the Italian tradition landscape and architecture that offers consideration to both private and public spaces. While in Italy he also met his future wife, and their marriage affords many return visits to visit family and experience Italian design sensibilities again and again. The varied agrarian and urban landscapes of Texas, the greater Southwest, and Italy continually shape his understanding of design, translating to the experiences enjoyed by visitors to and inhabitants of his projects in Texas, California, Oklahoma, and beyond.

David's built works are diverse in typology, however his residential work was initially recognized and widely published. David values and professes the importance of great residential design and the relatively close client collaboration, toward a better-informed design approach in the broader landscape architecture field and beyond. This typology has served as the

I enthusiastically recommend David Hocker for induction into the ASLA Council of Fellows. David has a long relationship with our School, first as a student and currently as an active and supportive alum. Utilizing his diverse skills and the different experiences he has accumulated in the art of landscape architecture over the years, David has made a profound and lasting impact on the day-to-day life of our School as well as its adjoining Abbey.

Fr. Paul McCormick
Headmaster
Cistercian
Preparatory School

David Hocker, ASLA

Award - Lyme, NH
2016, April, Texas ASLA Merit Award - Westover Hills
2016, April, Texas ASLA Merit Award - Bennett Drive
2015, December, PaperCity Dallas Design Award, Residential >3,500sf - Cedar Creek
2015, November, Cistercian Preparatory School Jim & Lynn Moroney Award for Outstanding Alumnus
2015, April, Texas ASLA Honor Award - Cedar Creek
2015, April, Texas ASLA Merit Award - Dartmouth
2014, April, Texas ASLA Honor Award - Brookhollow
2014, April, Texas ASLA Merit Award - Watershed
2014, April, Texas ASLA Merit Award - Penthouse
2013, April, Texas ASLA Honor Award - The Power Station
2013, April, Texas ASLA Honor Award - Larchmont
2013, April, Texas ASLA Merit Award - Pomona
2012, April, Texas ASLA Honor Award - Livingston
2012, April, Texas ASLA Merit Award - The Power House
2011, April, Texas ASLA Honor Award - Flite Acres
2011, April, Texas ASLA Honor Award - Urban Meadow
2011, April, Texas ASLA Merit Award - Buena Vista
2010, April, Texas ASLA Merit Award - White Rock House
2010, April, Texas ASLA Merit Award - Kessler House

backbone of his firm, providing structure for the firm's growth and affording a place for experimentation in spatial relationships, detailing, and materials use. Lessons learned from this project typology serve to influence the firm's non-residential work, resulting in evocative spaces that are memorable, hospitable, unpretentious, and livable.

David's design and landscape architecture contributions go far beyond his company's for-profit work toward several non-profit, professional, academic, and municipal client organizations. These include Jubilee Park Resource Center, the Cottages at Hickory Crossing, YWCA of Metropolitan Dallas, Cistercian Boy Scout Troop, ASLA, Texas Chapter of ASLA, DFW Chapter of ASLA, Cultural Landscape Foundation, Dallas Architecture Forum, AIA Dallas, Greater Dallas Planning Committee, numerous garden clubs, Texas A&M University, the University of Oklahoma, Oklahoma State University, the University of Texas at Arlington, Cistercian Preparatory School and Abbey, and the City of Clarksville (Texas). Work with some of these organizations has included campus master planning, site-specific designs, and town square re-inventions. Great amounts of time have been contributed to presenting, mentoring, and providing design jury services to programs sponsored by the schools and professional organizations. More recent efforts include presentations at ASLA's Annual Meeting in Los Angeles (Inside the LA Studio with Hocker Design Group) and the Texas Chapter of ASLA's 2016 conference in Fort Worth. Participation consecutive Garden Dialogue events with the Cultural Landscape Foundation and project tours with the DFW Chapter of ASLA, Dallas Architecture Forum, and AIA Dallas have helped these organizations' fundraising efforts.

Selected Projects:

The Power Station | Dallas, Texas

Role: Principal Designer

Awards: 2016 ASLA Honor Award, 2016 American Architecture Prize - Bronze, 2013 Texas ASLA Honor Award

The Power Station is an indoor/outdoor art exhibition space, guest artist's residence, and not-for-profit organization housed in a historic 1926 Dallas Power & Light electrical substation building in a mostly transitional, light

David is a careful listener, a true collaborator, and places pragmatic needs of the client and the project ahead of aesthetic moves and design hooks. In fact, his work often utilizes challenging budget and program restraints to establish design direction and vocabulary. I find his serious knowledge of plant material and design approach refreshing and non-pretentious. Make no mistake; his work is sophisticated and fresh. It comes from his heart and soul.

Gary Cunningham,
FAIA
President
Cunningham
Architects

David Hocker, ASLA

2009, April, Texas ASLA Honor Award - House on Cedar Hill

2009 April, Texas ASLA Merit Award - Midbury House

2008, April, Texas ASLA Honor Award - The Pool House

2008, April, Texas ASLA Merit Award - Park Lane House

2007, April, Texas ASLA Honor Award - The Belmont Hotel

PROFESSIONAL LEADERSHIP ACTIVITIES

2016, Co-Presenter, "Value of Residential Landscape Architecture", Texas ASLA Conference

2014, Professional Awards Jury Member, National ASLA

2012, Featured Alumni Presenter, Aggie Workshop, Texas A&M University

2007, Adjunct Professor, Design Studio I, Program in Landscape Architecture, The University of Texas at Arlington

2005, Juror and Designer for "America's Home" in Atlanta, Georgia, *Better Homes and Gardens*

PUBLICATIONS / RESEARCH

2017 (September), "Dallas' Own Italian Villa is an Oak Cliff Marvel", *PaperCity Dallas*

2016 (Spring), "Contemplating the Commotion", *The Continuum*

2016 (March), "CCR1 Residence", *Architect Magazine*

industrial neighborhood in East Dallas. An urban garden gallery springs to life within the former industrial compound, healing the site back to an industrially-influenced semblance of what it may have been in a prior life. The property's streetscape offers an artistic, durable solution for the gritty neighborhood, mixing new hardscape with elements of old. Throughout, the building and garden relate to one another gently through the careful manipulation of crisp architectural elements that are intentionally eroded by more informal, lush native plantings. The garden and renovated industrial space invites artists to respond to the raw character of the architecture and its surrounds. The project is a welcomed reminder that a thoughtful renovation of historical building and site can generate spaces that provide both form and function. David Hocker continues to work with The Pinnell Foundation, the center's owner, to coordinate and curate contemporary art exhibitions for the gallery's indoor and outdoor spaces.

Cedar Creek | Trinidad, Texas

Role: Principal Designer

Awards: 2016 Architizer A+ Award Finalist: Private Gardens, 2016 American Architecture Prize - Silver, 2015 ASLA Award of Excellence, 2015 PaperCity Dallas Design Award, 2015 Texas ASLA Honor Award

With a wooded, 7-acre site above Cedar Creek Lake as a starting point, this project's master plan situates the house, pavilion, tennis court, garage barn, boat dock, and boardwalk amongst a high canopy of existing loblolly pine and live oak trees and along the edge of the lake. This carefully considered siting minimizes tree loss while maximizing views to the lake beyond, a requirement of the project's program, as defined by the owner who had planted many of the pine trees with his grandfather as young child. The project establishes discrete entry, living, and recreation functions in its relative outdoor spaces that include a beach front lake entry; lakeside patio; entry side outdoor living room; a cobbled entry drive with a parallel, axial stone wall; and motor, bocce, and tennis courts. A simple and restrained design palette of wood, stone, concrete, and weathered steel are used throughout the project, reflecting the native environment. Native East Texas plants support and soften the hard architectural elements that define spaces throughout the project. The overall result of a strong collaboration between the design team and client transformed a long-held family property into a legacy destination where the harmony between built structure and site results in a completed project that feels as if it

I am a real estate developer around the urban core of Dallas. David and I have worked together for 6 years. During that time he has distinguished himself as honest, hardworking, knowledgeable and creative. The words "no" or "I can't" are simply not in his vocabulary. David has provided solutions that evoked the history of the land, blew past the current day's design envelope, and somehow saved costs to my bottom line in the process.

Brent Jackson
President
Oaxaca Interests

David Hocker, ASLA

has been in situ for years.

The Power House | Dallas, Texas

Role: Principal Designer

Awards: 2012 Texas ASLA Merit Award,
2010 ASLA Honor Award

After sitting vacant and inoperable for twenty years, this 1923 Dallas Power and Light Company electrical substation was transformed into a single-family residence. The industrial compound is an urban landmark in its neighborhood, located near the Katy Trail, a rails-to-trails recreation amenity, so its rehabilitation serves both the owner and public. The exterior areas offer a small slice of a native North Texas prairie: unmown buffalo grass with wildflowers that soften the ground plane and groves of Eve's necklace trees that provide scale to the tall masonry walls. Along the western edge of the property, a raised basalt boulder plinth provides an urban edge to a tight pedestrian space, while concealing electrical vaults for the home's power. High Rise live oaks emerge from this foundation to create shade for the three-story windows of the residence. Inside the compound a motor court is enclosed with a living green screen providing privacy. The main courtyard is surrounded by an existing brick wall, and existing concrete transformer and equipment pads are left in situ and incorporated into the design. A north steel pivot gate opens to reveal a tilted plinth of flowing buffalo grass. The 10-year project has stood the test of time, and it offers subtle lessons in native ecology that now expand along the adjacent trail.

The Pool House | Dallas, Texas

Role: Principal Designer

Awards: 2010 ASLA Honor Award, 2008 Texas
ASLA Honor Award

The Pool House serves as an urban retreat for an artist and car enthusiast who live next door. The project functions as the center for family and social gatherings, successfully accommodating varying sized crowds. The importance of a seamless transition between interior and exterior is apparent; the Pool House sits on a concrete plinth toward the back of the property that extends out to surround the swimming pool as its deck. A small water feature cast into the concrete deck provides subtle noise to eliminate any distractions from beyond the garden walls. Large stone slabs provide transition to the landscape

David Hocker has emerged from the "interesting young gun" to a design leader in landscape architecture.

David's unique and awarded projects are contextual, deeply considered, thoroughly researched and masterfully detailed. The results are crafted, visually exciting sustainable environments enriching the lives of the owners, the community, and our profession.

These attributes aspired to by all landscape architects define the daily practice of David's studio work.

I fully endorse David as an ASLA Fellow.

Chuck McDaniel,
FASLA
Managing Principal
SWA , Dallas

2016 (March), "Saving Water is so Hot Right Now in Landscape Design", *Wired*

2016 (Early Spring), *Garden Design*

2016 (January), *PaperCity Dallas*

2015, *Landscape and Garden Design Sketchbooks*, Tim Richardson

2015 (Dec.), "The Serenity of Straight Lines", *Landscape Architecture Magazine*

2015 (Nov./Dec.), "Natural Connection", *Luxe Interiors + Design Dallas/Fort Worth*

2015 (Oct.), "The 2015 ASLA Professional Awards", *Landscape Architecture Magazine*

2015 (Sept./Oct.), "2015 Design Awards", *Texas Architect*

2015 (Summer), "The Landscape as Life Lesson", *FD House*

2015 (v19, v20, & v23), *World Landscape Architecture*

2015 (May), "A Natural Talent", *PaperCity Dallas*

2014, *Dallas Modern*, Dallas Architecture Forum

2014 (No. 12), "Zeleno skrovište", *Ecokuća*

2014 (Summer), *Modern Luxury Interiors, Texas*

2014 (Spring), *Modern Luxury Interiors, Dallas*

2014 (No. 49), *International New Landscape*

2013 (Mar./Apr.), *Extérieurs Design*

2012, *A Garden Makes a House a Home*, Elvin McDonald

2012 (Apr.), *Garden Design*

David Hocker, ASLA

2011, *Residential Landscape*, Arthur Gao

2011, *Outdoor Spaces*, Tim Richardson

2011 (May), *Landscape Architecture Magazine*

2011 (No. 01), *International New Landscape*

2010 (Sept./Oct.), *Garden Design*

2009 (Apr.), *Metropolitan Home*

2009 (Sept./Oct.), *Texas Architect*

2008, *City by Design: An Architectural Perspective of Dallas*, LLC Panache Partners

2008 (Spring), *Modern Luxury Interiors*, Dallas

2008 (May), *Metropolitan Home*

2007 (Sept.), *FI!Deluxe*

2006 (Feb.), *Better Homes and Gardens*

2005 (Nov.), *Better Homes and Gardens*

2005 (Fall), "Simply Spacious", *Better Homes and Gardens Special Interest Publications*

2005 (Sept.), "Living from the Outside In", *Better Homes and Gardens*

EXPERIENCE

2004-2018

President, Hocker Design Group

2001-2004

Designer, David Rolston Landscape Architects

2000-2001

Designer, Naud Burnett & Partners

spaces beyond, becoming connectors throughout the site. A minimal plant palette creates mass plantings used for large textural impact and privacy screening. Along the central spine of the site is a privacy wall, placed along the typical neighborhood setback line. This sculptural element is a stainless steel cage filled with blue recycled glass slag, lit internally at night for added impact. The project has received both national and regional recognition, and it has been published across the globe.

Eagle Family Plaza at the Dallas Museum of Art | Dallas, Texas

Role: Principal Designer, in a Joint Venture with StudioOutside

Awards: 2017 Texas ASLA Merit Award

The Eagle Family Plaza at the Dallas Museum of Art (DMA) transforms a thirty-plus year old campus's north end, originally conceived as the vehicular entrance, into an active open space for play, dining, strolling, and reflection. The adjacent Klyde Warren Park increased the programmatic potential for the space, and the new design successfully responds by providing a new front door to the museum. An outdoor dining terrace and lounge area extend from the interior café with low decking for dining, al fresco, under a light steel arbor that provides the framework for a green wisteria ceiling. Adjacent to this space a new lawn replaces a duplicate drive lane and serves as a simple, elegant space for sculpture, impromptu children's play, and seating for special events and festivals. Updated plantings include an intentionally seasonal palette, formally organized, that suggests a welcoming feel of the expanded urban space. The design team achieved this success with smart design choices supported by a slim construction budget of \$3 million. An uncomplicated design parti provides easily understood, unassuming spaces where users of all walks of life feel comfortable and welcome, reflecting on the museum's own statement that, "visitor engagement is the cornerstone of the Museum's institutional vision."

Summary:

David Hocker's contribution to landscape architecture is apparent in his completed works. The works continue to evolve and grow, and his influence in the allied professions responds accordingly. What he started as a summer yard service in his junior high years has evolved into a passion for responsibly considered, beautiful and safe spaces for the people that will inhabit them. David continues to seek better solutions to previous design explorations through extensive travel and endless hours of sketching, and he will continue to influence the profession in a positive way for many years to come. The Texas Chapter of ASLA provides its utmost support and nomination of David Lennox Hocker to the ASLA Council of Fellows.

Sincerely,



Clifton Hall, ASLA
Texas Chapter ASLA President



Hocker Image 01
The Power Station

The Power Station's stately façade is anchored by a newly-established surrounding of native spineless prickly pear, mesquite, and frogfruit.



Hocker Image 04
The Power Station

A simple cantilevered angle iron fence provides a secured transparent edge that creates a larger sense of scale.



Hocker Image 03
The Power Station

An interactive art installation, a detail collaboration between the artist and landscape architect, is shown alongside the building in its gravel court.



Hocker Image 04
The Power Station

A simple vertically cantilevered steel angle fence provides graphic shadows on the gravel and concrete floor of this reclaimed landscape at another Dallas Power and Light sub-station building that serves as a not-for-profit art foundation and artist-in-residency loft.



Hocker Image 05
Cedar Creek

The entry court of the residence serves as an outdoor living room, secluded from the motor court beyond by a stone wall with a cantilevered concrete hearth complete with a fireplace.



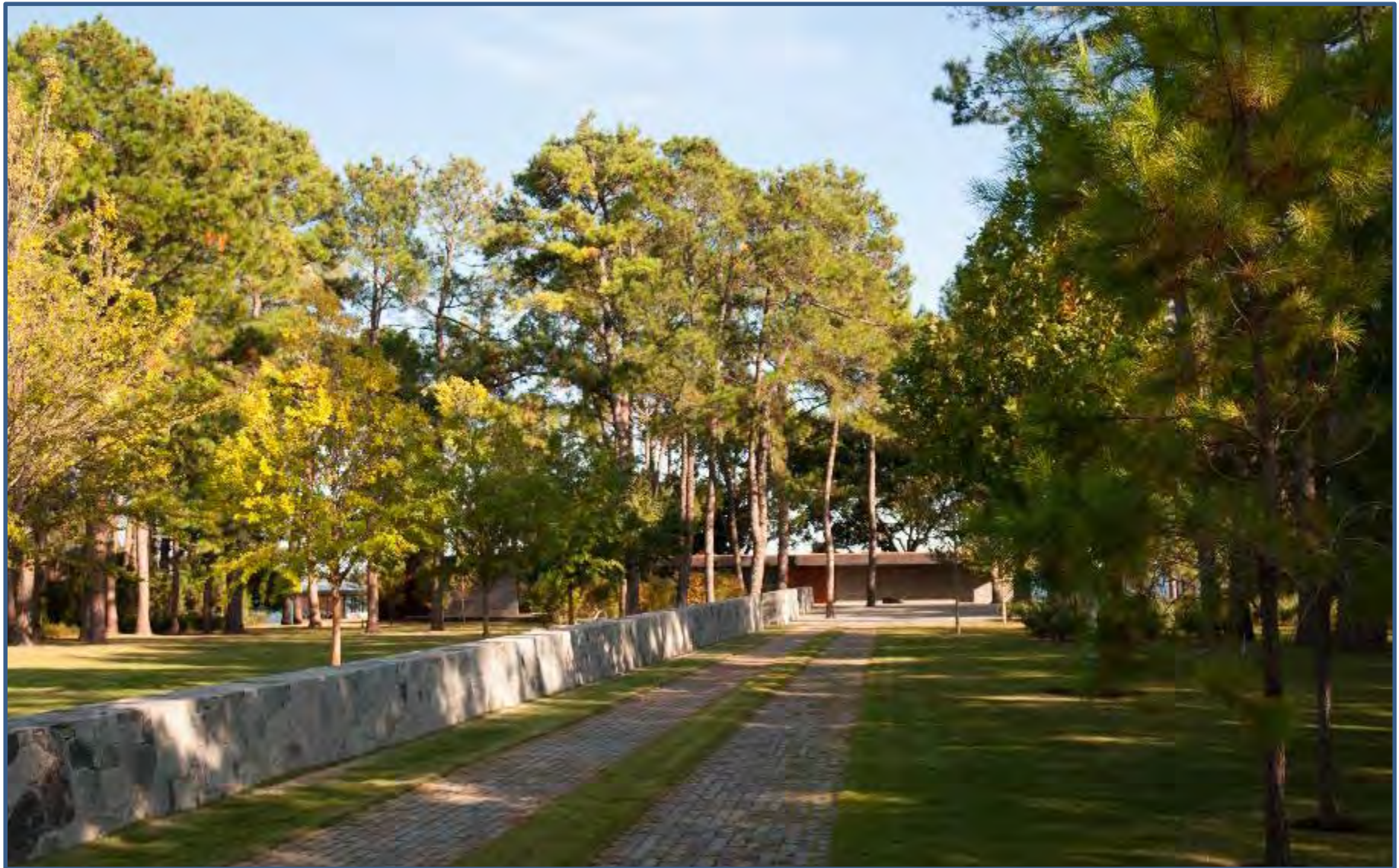
Hocker Image 06
Cedar Creek

The main house, as sited by the landscape architect, is carefully slipped into a grove of existing loblolly pines on the property.



Hocker Image 07
Cedar Creek

A bocce court serves as a beautiful recreation space that stretches along a guesthouse pavilion with views to the lake beyond.



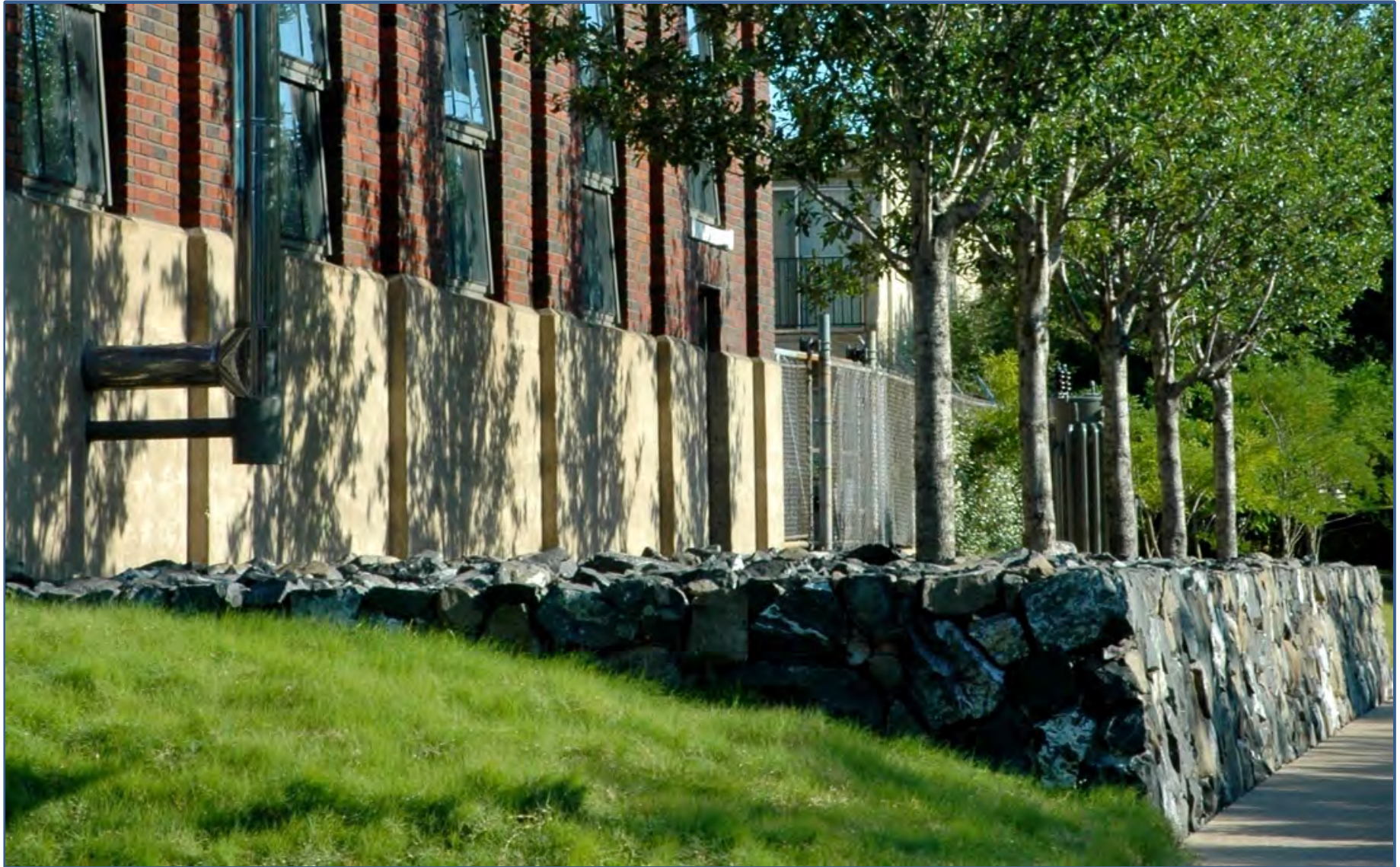
Hocker Image 08
Cedar Creek

The seeded cobble drive approach and adjacent parallel stone wall lead toward the gravel motor court.



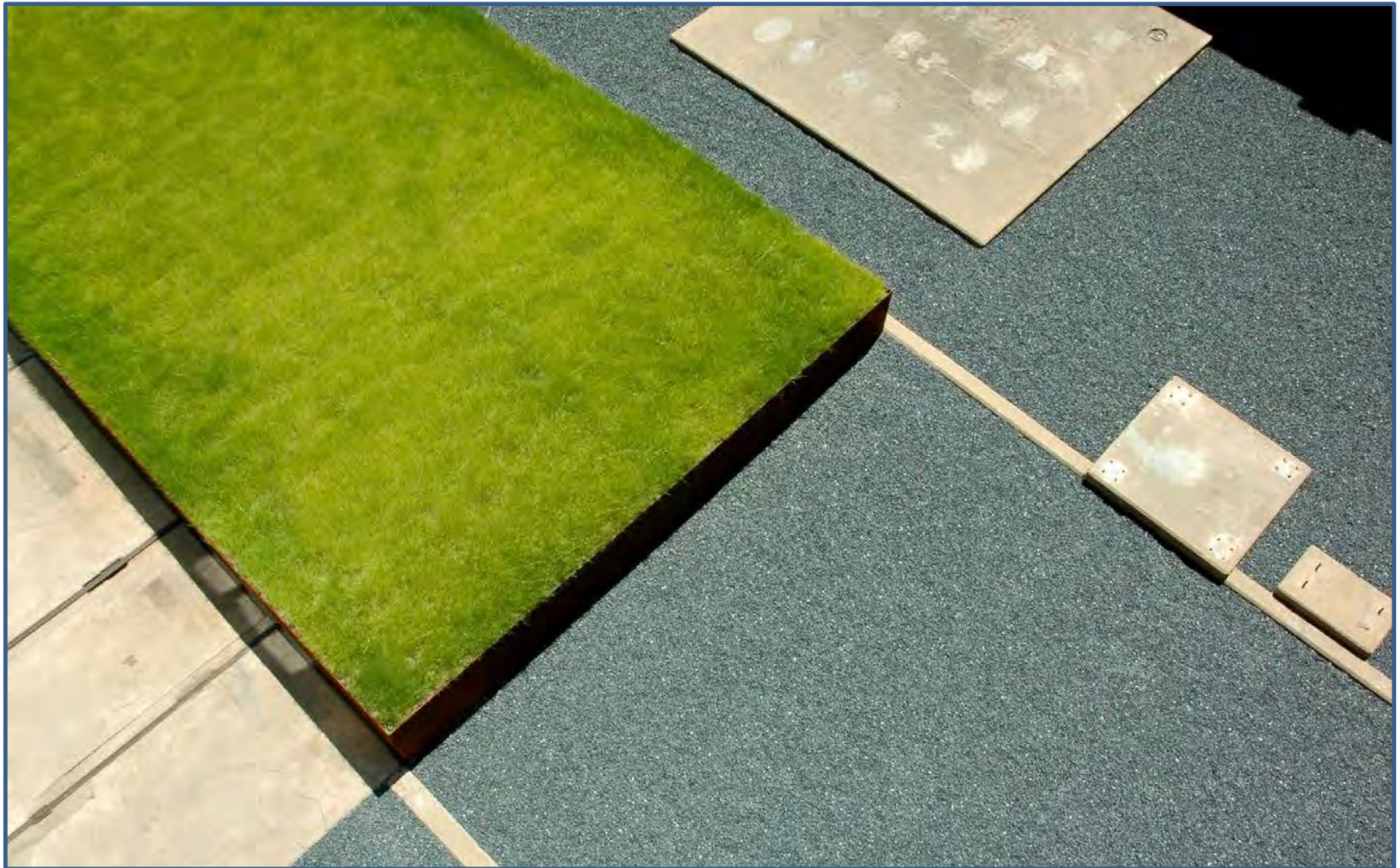
Hocker Image 09
Power House

The sloped former utility yard of this repurposed Dallas Power & Light building provides an industrial palette for a turf plinth that appears to rise from the courtyard's floor.



Hocker Image 10
Power House

A basalt plinth along a city sidewalk serves to conceal the industrial sized vent shafts alongside the building while providing a raised planter for street trees to shade pedestrians.



Hocker Image 11
Power House

The turf plinth and salvaged industrial concrete pads on the courtyard floor provides an artful graphic for the large upper floor windows of the residence and solid surfaces for seating of outdoor events.



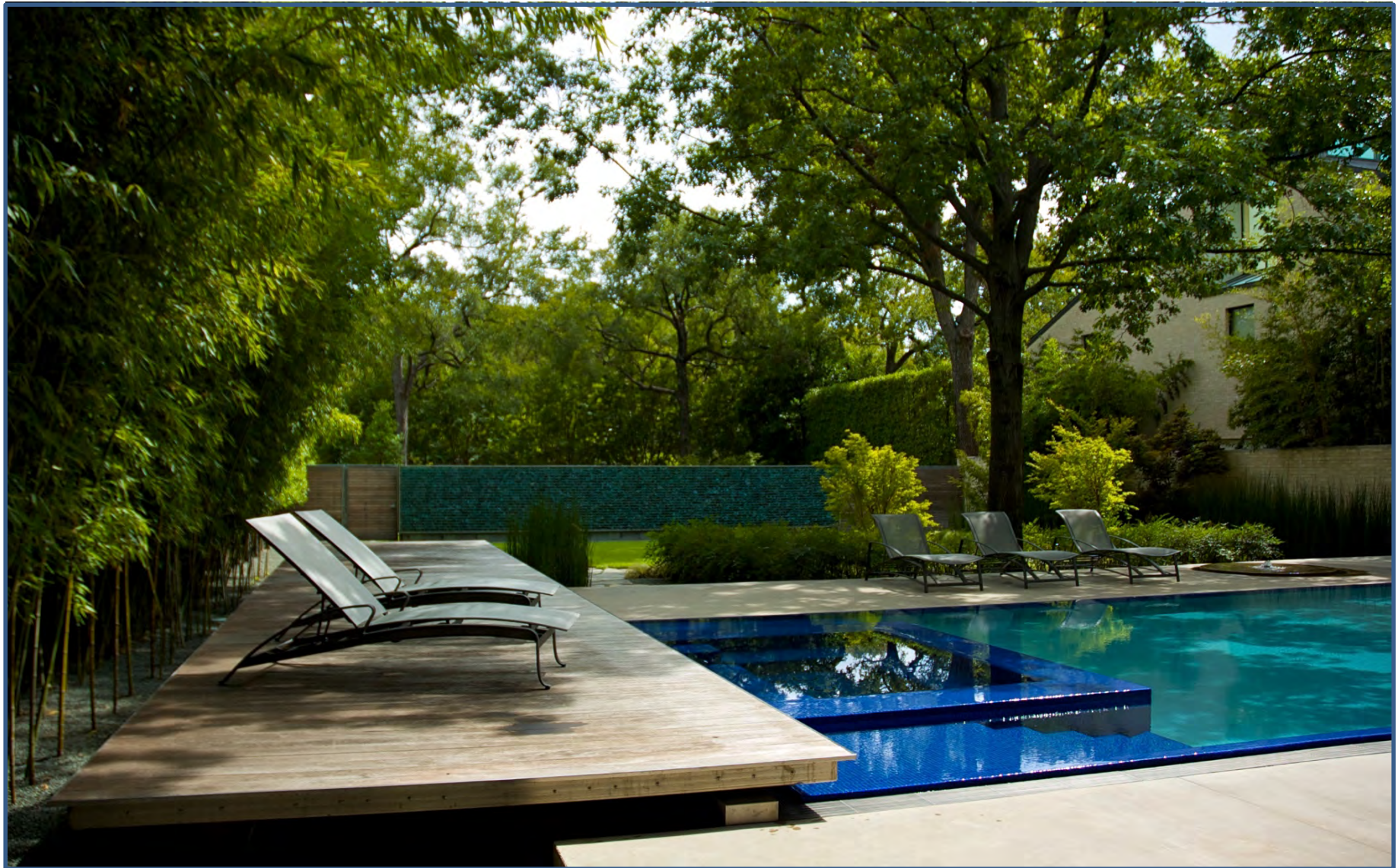
Hocker Image 12
Power House

The interior courtyard features native mesquite trees, preserved concrete pads, gravel surround, and a tilted plinth of buffalo grass.



Hocker Image 13
The Pool House

A client's love of blue prevails in the lighting and pool surround of this pool house/art studio project.



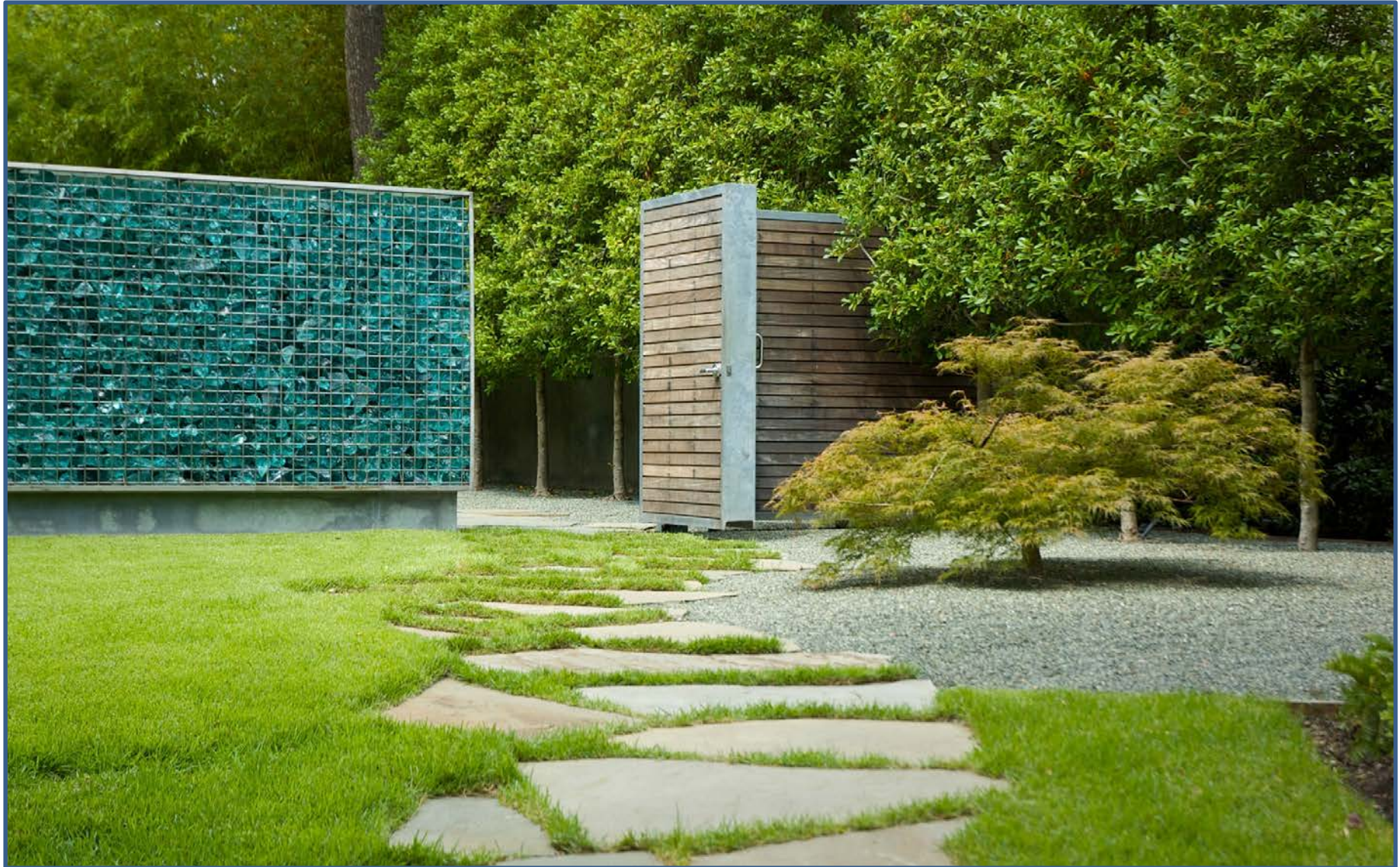
Hocker Image 14
The Pool House

A floating ipé deck extends along one end of the level pool, and a unique gabion-inspired, recycled glass slag wall conceals the space from the public street beyond.



Hocker Image 15
The Pool House

Horizontal planes of changing textures project through vertical plantings that provide separation between a series of outdoor rooms.



Hocker Image 16
The Pool House

A recycled glass slag wall with a galvanized steel and ipé gate serves as an artful separation between the private and public space in this garden.



Hocker Image 17
Eagle Family Plaza at the Dallas Museum of Art

The new trellis covered seating space and terraced lawn are separated from the alternate vehicular drive by a low concrete wall and planting.



Hocker Image 18
Eagle Family Plaza at the Dallas Museum of Art

A new trellis provides shelter for the pedestrian route and outdoor dining area.



Hocker Image 19
Eagle Family Plaza at the Dallas Museum of Art

A new food kiosk enlivens the covered outdoor dining and lawn space flanking new pedestrian access from Harwood Street.



Hocker Image 20
Eagle Family Plaza at the Dallas Museum of Art

New sculpture is sited on the lawn along the central axis shared by the interior restaurant's entry and exterior deck spaces.

Ying-yu Hung, ASLA

Managing Principal, SWA Los Angeles

Portfolio for Council of Fellows Application

January 26, 2018

yhung@swagroup.com

San Jacinto Plaza

El Paso, Texas

Completed April 2016



Hung Image 1
San Jacinto Plaza

San Jacinto Plaza represents the aspirations of the City of El Paso: to reinstate its public spaces as the locus of civic life. The culmination of El Paso's decade-long vision to promote an active and engaged public street life, the new plaza is the centerpiece of downtown revitalization.



Hung Image 2
San Jacinto Plaza

During the community charrettes, Ying-yu identified the primary goal of uncovering design elements that reinforce civic pride. Taking advantage of the existing topographic changes, pedestrian bridges cross over the native planting and stormwater catchment designs, connecting both active and passive spaces around the site.



Hung Image 3
San Jacinto Plaza

The active programs such as outdoor ping-pong tables have become a central draw for multi-generational users. The goal of the SWA design team led by Ying-yu was to activate the historic plaza, and to revive its storied reputation as the central gathering space of El Paso.



Hung Image 4
San Jacinto Plaza

The central water feature displays a historic sculpture celebrating the live alligators that were once kept at this site. The pavement motif mimics the local arts and crafts of this region, harkening to the historic and cultural values of El Paso.

Sands Bethworks – Bethlehem Steel

Bethlehem, Pennsylvania

Completed March 2008

2014 ASLA Southern California Chapter Honor Award



Hung Image 5
Sands Bethworks - Bethlehem Steel

Once a steel mill in the heart of industrial America, the landscape design led by Ying-yu Hung celebrates the industrial history with plant materials that echo the colors of buildings' patina. The design is meant to authentically embrace the industrial might of America's steel towns.



Hung Image 6
Sands Bethworks- Bethlehem Steel

The iconic iron ore crane greets Sands Bethworks visitors upon entry, emphasizing the rectilinear geometries of depressions made by ore extraction activities. Ying-yu Hung's inspiration for the geometric patterns is to pay homage to a working landscape scale, where cargo and materials were once mechanically transported.



Hung Image 7
Sands Bethworks- Bethlehem Steel

Gravel bioswales meander throughout landscape, intercepting stormwater and runoff from adjacent areas and reducing pollutant loads by filtering and collecting toxins. As polluted water percolates through amended soils, naturally occurring micro-organisms break down and neutralize toxic chemicals and other compounds.



Hung Image 8
Sands Bethworks- Bethlehem Steel

Ying-yu Hung selected juniper and birches that can tolerate extreme soil conditions remnant of the industrial past. The industrial byproducts of the steel plant created a highly acidic soils. The chosen plants display colors that conjure the rusted, post-industrial sites of Pennsylvania's industrial heartland.

Milton Street Park

Los Angeles, California

Completed March 2016

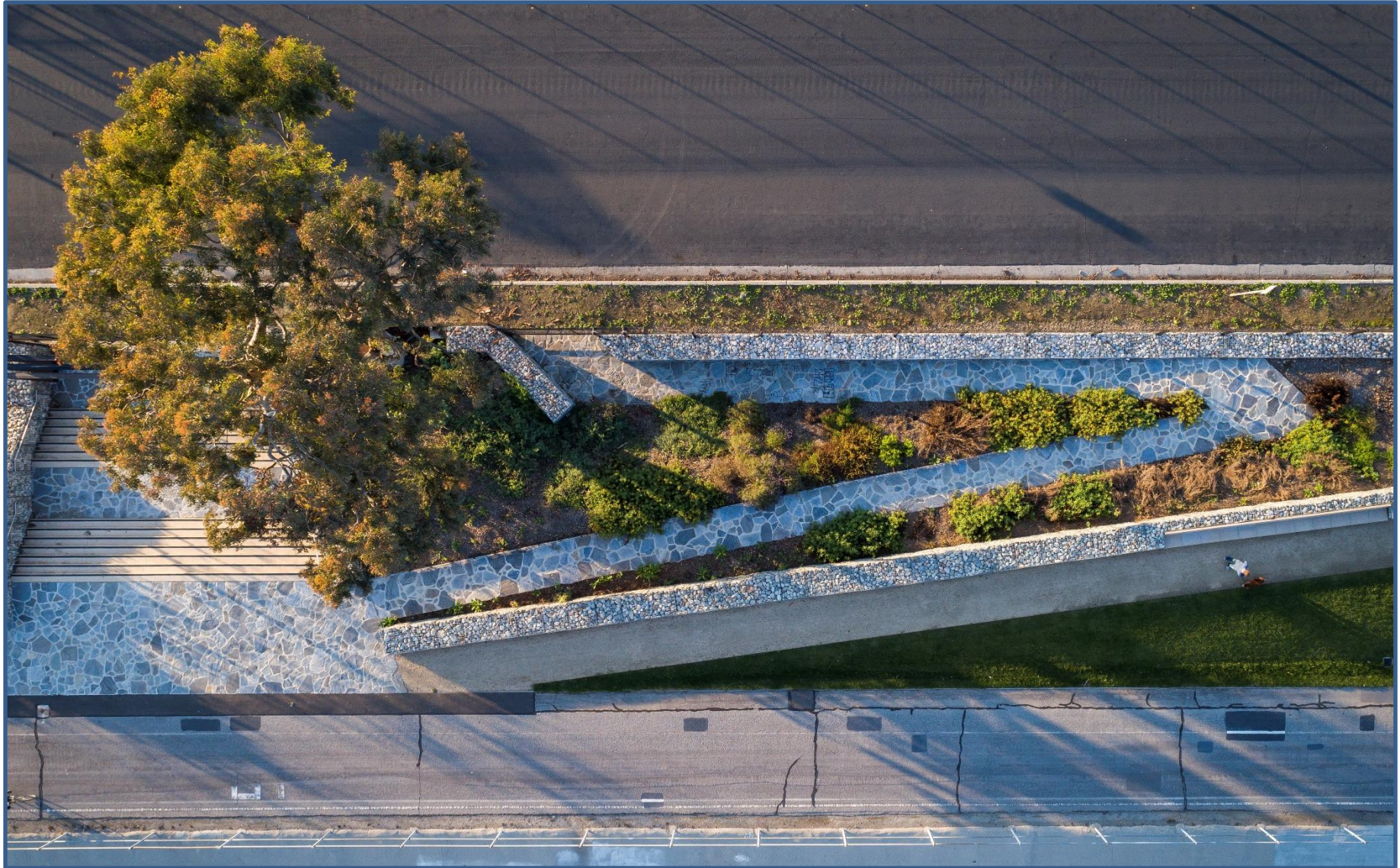
2011 Westside Urban Forum Merit Award, Open Space

2016 ASLA Southern California Merit Award



Hung Image 9
Milton Street Park

Located along the Ballona Creek Watershed, Milton Street Park is the first major landscape project to be realized along Los Angeles' storm channels and foregrounds best practices for development along the Los Angeles River.



Hung Image 10
Milton Street Park

Milton Street Park revitalizes what was a derelict landscape atop a levee to a functional urban park. The park is designed to filter stormwater before entering the Ballona Creek.



Hung Image 11
Milton Street Park

Today Milton Street Park encourages a variety of recreational users to visit the Ballona Creek Bike Trail. New trails and pathways splinter off of the bike trail, offering users of all speeds a variety of circulation routes.



Hung Image 12
Milton Street Park

By tenaciously working across multiple public agencies and jurisdictions, Ying-yu and the design team helped guide all phases of development and implementation: creating a neighborhood park that promotes local ecologies, retain storm water, promote safety, and enhance recreational opportunities.

Gubei Pedestrian Promenade

Shanghai, China

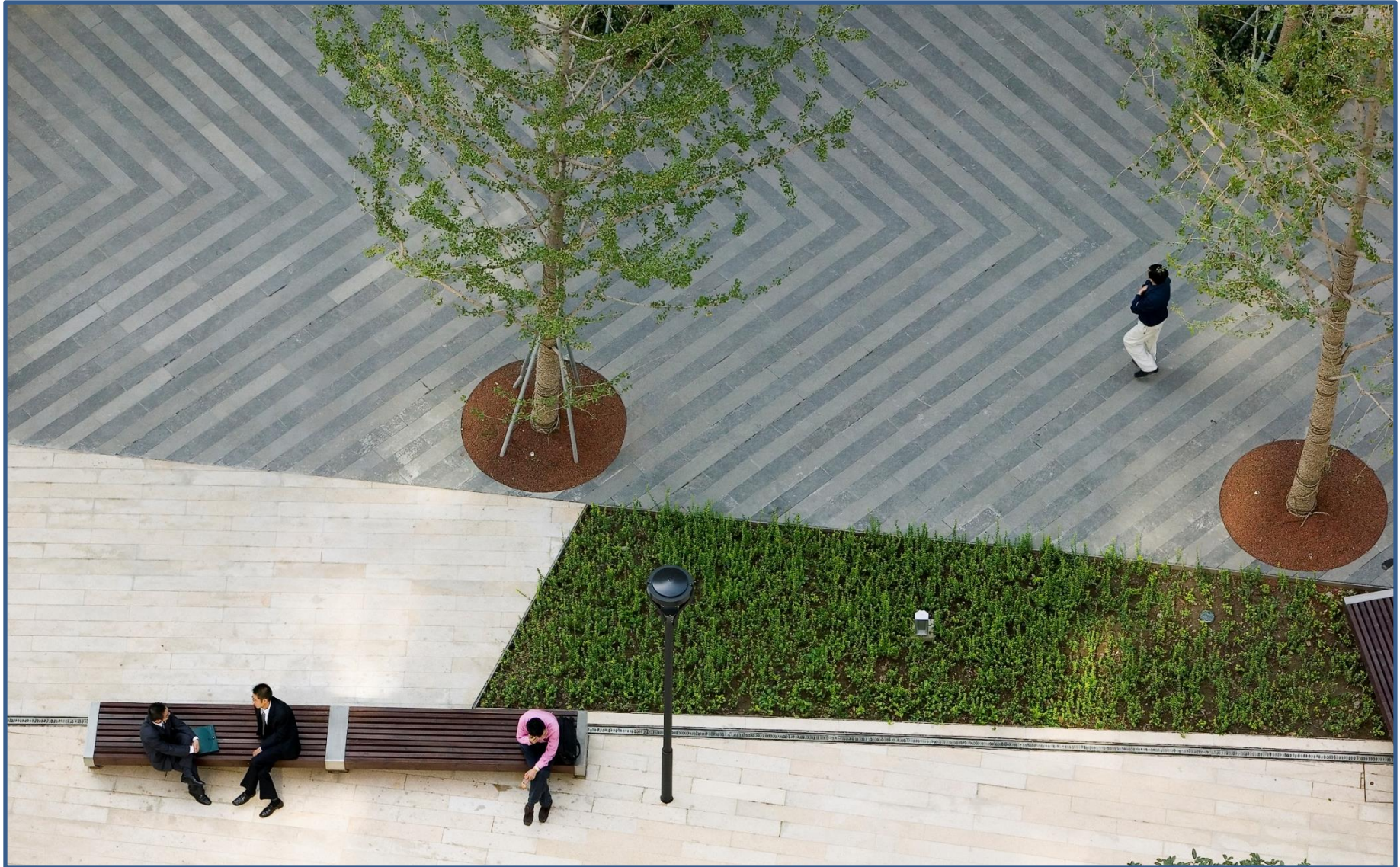
Completed 2009

2012 ASLA Southern California Award of Excellence

2012 ASLA Southern California Honor Award

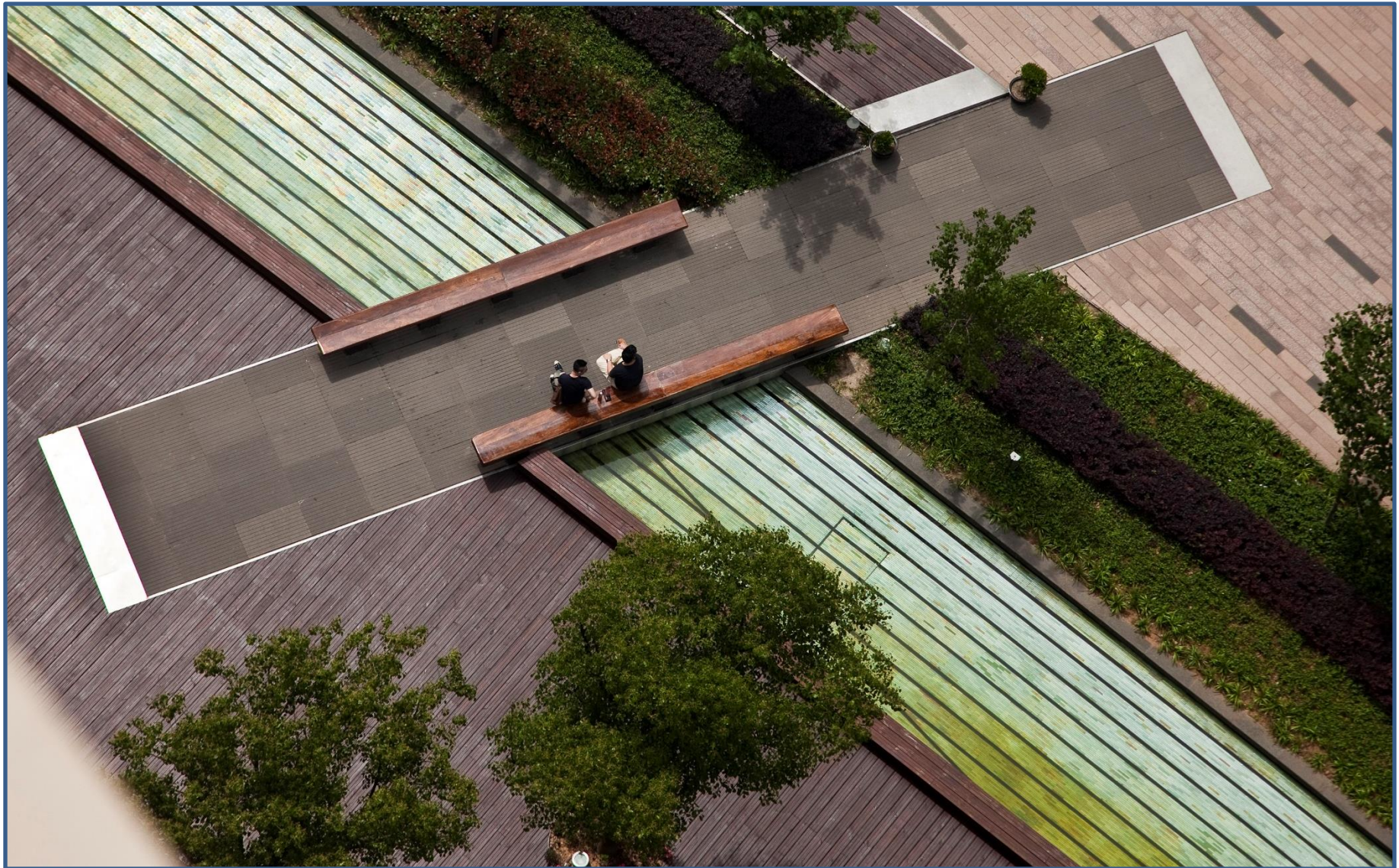
2011 ULI Finalist for Award of Excellence: Asia Pacific

2010 Ideal Space book – Best Open Space in China



Hung Image 13
Gubei Pedestrian Promenade

The shopping arcade is a public forum for people of all walks of life to mix and mingle. The linear space is bookended by lively retail spaces, and the multi-cultural nature of Shanghai's international neighborhoods provides an opportunity to connect with many different cultures in a short 500 meter walk.



Hung Image 14
Gubei Pedestrian Promenade

Aerial view of a pedestrian bridge crossing over a fountain. Wood, stainless steel and linear glass-tile provide an interactive experience for the pedestrians. This space is meant to be a moment of pause for the hustle and bustle of Shanghai.



Hung Image 15
Gubei Pedestrian Promenade

Just a few steps in from the main promenade space is a frequented seating area for residents looking to enjoy a moment of respite.



Hung Image 16
Gubei Pedestrian Promenade

The water feature serves to unite the open space, an artistic interpretation of the many rivers and mountains that are common in the Chinese countryside.

Palisades Park

Santa Monica, California

Completed 2016



Hung Image 17
Palisades Park

Situated adjacent to the iconic Santa Monica pier, Palisades Park is a '18 hour site' – where people from all walks of life activate the space through day and night.



Hung Image 18
Palisades Park

Planted with California native and drought tolerant plants, seasonal interest can be seen in the blooming aloes during spring. The custom designed fencing and exuberant planting displays are meant to deter people from compacting the soil and slowly killing the park's botanic atmosphere.



Hung Image 19
Palisades Park

As one of Santa Monica's most well used public spaces, Palisades Park is also adjacent to the Expo Line metro station, Third Street Promenade, and other key commercial and touristic destinations.



Hung Image 20
Palisades Park

Visually compelling planting displays are filling the area where once only compacted earth was found. This public space recognizes the need for a holistic design solution, especially in highly trafficked areas such as Santa Monica, but also the universal desire to see beauty in the everyday landscape.

Ying-yu Hung, ASLA

Managing Principal, SWA

ASLA Council of Fellows Nomination: WORKS

On behalf of the Executive Committee of the ASLA Southern California Chapter, it is my privilege to nominate Ying-yu Hung, PLA, ASLA, for the 2018 Fellowship candidacy.

EDUCATION

Master of Landscape Architecture, Harvard University, Graduate School of Design, 1994.

Bachelor of Arts, Architecture with Honors, University of California, Berkeley, 1990.

REGISTRATION

Registered Landscape Architect, California (#4374, first registered in 2000), Texas (#2828)

HONORS AND AWARDS

National Awards

2012, ASLA National Honor Award, Communications, Landscape Infrastructure: Case Studies by SWA

2011, ULI Awards for Excellence: Asia Pacific Competition Finalist: Gubei Pedestrian Promenade

2009, ASLA National Honor Award, Zobon City Sculpture Garden, Shanghai, PR China

2008, ASLA National Honor Award, North Lake Region of Chongming Island, Shanghai, PR China

Regional/Local Awards

2017, Governor's Environmental and Economic Leadership Awards (GEELA), Inisght Garden Program

2017, American Public Works Association Southern California Chapter B.E.S.T. Award for Recreational Facilities, Bicentennial Park

2016, October, ASLA Merit Award Southern California

Executive Summary

In her two decades of practice, Ying-yu Hung has employed her visionary design skills to transform derelict parcels into beautiful, active public spaces. Pushing through design constraints with tenacity and creativity, she realizes her concepts through innovative material applications that meet challenging budgets and site conditions. The resultant spaces empower communities and ignite their imagination of what is possible when people work together to improve their neighborhoods. Ying-yu is a design leader who is deeply empathetic to those she serves, determined to create not only exceptional places, but also to give meaning and form to the public's voices and desires.

Ying-yu Hung completed her design studies at the University of California, Berkeley from which she graduated with honors from the architecture program, and at the Harvard Graduate School of Design, where she received her degree in Master of Landscape Architecture. This well-rounded education has contributed to her ability to design for both the human scale and the temporal quality of living materials.

Through her experience of immigrating to the United States from Taiwan by way of Costa Rica, she has an intuitive understanding of how landscapes shape one's sense of self and identity. Design transforms ideas into physical form; but Ying-yu reaches broadly to communities and local narratives as a way to ensure that the spaces are well cared for, and fulfills diverse needs and cultural backgrounds. She utilizes her design skills to serve newcomers in Los Angeles, who are eager to exercise the universal desire and search for a sense of belonging. Ying-yu's design process includes listening and gathering information through conversations, research, site observations, and outreach, in search of the essence of that desire.

In her material choices and designs she integrates arts, history, and direct feedback from communities, resulting in designs that are enchanting as much as they are practical. Through her work in park poor areas of Southern California, she has delivered public spaces that not only express community values, but

Ying-yu's genuine and resolute efforts guided several projects to completion while meeting the expectations and winning the approval of the highly demanding Santa Monica community; a well informed and politically active population. Ying-yu was instrumental in the successful execution of the Peace Garden at the base of Pulitzer Prize winning cartoonist Paul Conrad's sculpture, Chain Reaction, and the Palisades Park Landscape which is sited at Santa Monica's world famous pier.

Danny Welch,
Architect
City of Santa Monica

Ying-yu Hung, ASLA

Chaper, Quality of Life Awards Program, Milton Street Park

2016, October, ASLA Merit Award Southern California Chapter, Quality of Life Awards Program, Oxnard Green Alleys Plan

2015, June, Los Angeles Merit Award for Planning Best Practices, West Hollywood West Overlay District and Design Guidelines

2014, ASLA Honor Award, Southern California Chapter, Quality of Life Awards Program, Sands Bethworks: Case Studies by SWA

2014, ASLA Merit Award, Southern California Chapter, Quality of Life Awards Program, Giant Interactive Campus

2012, ASLA Award of Excellence, Southern California Chapter, Quality of Life Awards Program, Design, Gubei Pedestrian Promenade, Shanghai, China

2012, ASLA Honor Award, Southern California Chapter, Quality of Life Awards Program, Design, Gubei Pedestrian Promenade, Shanghai, China

2012, ASLA Merit Award, Southern California Chapter, Quality of Life Awards Program, Planning & Analysis, Anning River

2012, ASLA Honor Award, Southern California Chapter, Quality of Life Awards Program, Communications, Landscape Infrastructure: Case Studies by SWA.

PROFESSIONAL LEADERSHIP ACTIVITIES

also serve as vehicles to improve public health, stimulate economic growth, and improve environmental sustainability. Ying-yu's motivation to serve the public through design can be attributed to her personal narrative of arriving in a new land and making a home. She leads public outreach events in multi-lingual environments, thoughtfully devising exercises from arts incorporation workshops to community garden planting days to maximize inclusivity.

Ying-yu is also active in academia as an instructor and mentor to the next generation of landscape architects, and is also a highly-regarded author on contemporary issues. Ying-yu has served as an Adjunct Assistant Professor of the Landscape Architecture Master's Degree Program at the University of Southern California since 2007, and has taught design studios at the Harvard Graduate School of Design. Ying-yu challenges students to resolve issues related to density, environmental degradation, health and accessibility through landscape infrastructure – in which the design of cities and natural systems are integrated to promote a sustainable future. In 2011, she co-authored the award-winning book *Landscape Infrastructure: Case Studies by SWA* that projects the future of the profession, through essays and completed works.

SIGNIFICANT WORKS:

San Jacinto Plaza | Completed 2016
El Paso, Texas.

Role: Lead Designer / Principal-in-Charge

The San Jacinto Plaza redesign and renovation project in El Paso, Texas, opened to community fanfare with an ebullient 'Park Opening Fiesta'. Listening intently to the community stakeholders who spoke longingly of the plaza's illustrious past, Ying-yu designed a careful historic renovation that captured the spirit of the historic city, as well as the modern and forward-looking attitude of its residents.

Designed as a flexible open space for El Pasoans, San Jacinto Plaza is a popular gathering place and a hotbed of politics, identity, and culture. At the heart of the design challenge was reviving a historic park with a modernized and renewed sense of purpose. The restoration of a much loved alligator sculpture by the artist Luis Jimenez, a new shade structure that anchors the center of the site, and local artisanal patterns embedded in benches and pavements harken a strong connection to the core identity of El Paso.

Ying-yu's commitment to expressing the most essential aspects of a region

As an instructor in our Master of Landscape Architecture + Urbanism program since 2007, Ying-yu challenges our students to tackle social and environmental issues such as gentrification and climate change through design. Her impact can be seen in the strength of their work which have been recognized through the ASLA and the Olmstead Award. Ying-Yu is clearly committed to the profession by guaranteeing that the next generation of landscape architects is daring and ambitious.

Esther Margulies
Interim Director, Associate
Professor of Practice
University of Southern
California Master of
Landscape Architecture +
Urbanism

Ying-yu Hung, ASLA

Member, American Society of Landscape Architects

October 20, 2017, ASLA Expo Field Session Leader & Proposer, Biking LA's Coastal Waterways.

October 21, 2017, ASLA Expo Education Session Panelist & Proposer, Inside the LA Studio: SWA Group.

October 22, 2017, ASLA Expo Education Session Panelist & Proposer, Marginalized Spaces: Infusing Meaning through Art and Design.

September 16, 2017 - January 7, 2018, Ideas Competition Participant and Gallery Talk Panelist at the Chicago River Edge Ideas Lab (part of the Chicago Architecture Biennial).

September 21-22, 2017, Member and Panelist, Blue Ribbon Panel on Climate Change and Resilient Design.

March 4, 2017, APA-LA Field Session Panelist, The Bikable City - Culver City to the Beach.

June 8-10, 2016, Universidad Del Norte: "Parks in the Tropics", Keynote Speaker

May 18, 2016, Focus Group Summit; Mayor's Institute on City Design (MICD), Resource Team Member

November 19, 2015, CCA Architects: "Designing Today for L.A.'s Future", Panel Speaker

May 2015, "Being Local", Clemson University, Lecturer

November 19, 2013, "IDEA SWA," GSD Harvard, Lecturer

March 23-24, 2012, "Landscape Infrastructure:

was enabled by her unique eye on celebrating history through new material applications. To promote multi-generational appreciation, Ying-yu proposed active and passive programs including: ping-pong tables, a gravel pit for horseshoes, and ample seating areas with a view of the seasonal planting. As a result the design promotes cross-cultural and multi-generational users to come together and interact. Hence, the design features axial pathways that lead to the centrally located water feature, a shade structure that provides relief from the hot desert sun, and an interactive water feature for young families looking to cool down. The outdoor cafe is popular with the elderly folks who have expressed their amazement that a once derelict and underutilized public space could be transformed. El Paso is a historic border town that represents our multicultural and diverse nation, and the plaza design brings together people from all walks of life.

Sands Bethworks - Bethlehem Steel | Completed 2008

Bethlehem, Pennsylvania

Role: Lead Designer / Principal-in-Charge

Ying-yu transformed the former headquarters of Bethlehem Steel into a remediating green lung and a dynamic visitor experience. The site is EPA's largest brownfield conversion in the nation. Ying-yu incorporated remediation plants and color palettes in the landscape design to honor America's industrial heritage, and to breathe a new life into a formerly derelict site through preservation and adaptive reuse.

The design moves on this site purposefully highlight the industrial history of the steel mill. Ying-yu coordinated the selection of plants like birch and juniper that are not only resilient to post-industrial soils, but also have foliage that echo the tones of brown and rust that are reminiscent of the site's past uses. The large scale industrial operations are echoed in the bold swaths of planting, transformed as a graphic and vivid display of the power of plants.

Through an expertly trained eye on plant palettes and their ecological performance, Ying-yu demonstrates that landscape design is integral to lending significance to the site's history and purpose. Since 2008, the city of Bethlehem has seen an increase in tourism, leading to a more promising economic future. Over the years the plants have grown to create a tonal palette of green and brown that echo the industrial heritage of Bethlehem, Pennsylvania.

Ying-yu helped preserve and restore San Jacinto to its former glory, as one of the most iconic spots in El Paso. As a regional city, the challenges were many: gaining public support, garnering public funding, and creating a historically relevant and modern re-design. Through her sincere and tenacious efforts, our downtown continues to grow not only culturally, but economically as well, evidenced through the many business which have sprung up near the Plaza since it was re-opened.

Gilbert Guerrero
Project Superintendent
City of El Paso
Capital Improvement

Ying-yu Hung, ASLA

Systems & Strategies for Contemporary Urbanization", Lecturer

"Transpositional Futures," Lecture Series - Colorado State University (Apr. 2015); Tongji University (Nov 2014); Harvard GSD (Sep. 2011); UVA (Oct. 2011)

April 10, 2011, American Planning Association National Planning Conference, Panelist/ Moderator, "What is Landscape Infrastructure?"

October 2009, Peking University, Beijing, China, Lecturer/ Panelist, "Streetscape as Infrastructure"

"2009 Chinese Landscape Architecture Education Conference & Landscape Architects Congress on Landscape Urbanism",

April 2009, "Landscape Infrastructure in Plain View", School of Agriculture and Biology, Shanghai Jiao Tong University, Shanghai, PR China, Public Lecture

PUBLICATIONS

February 2016. Berg, Nate. "A Square on a Seam" Landscape Architecture Magazine, Vol. 106, Issue #2, pp 17-18

December 2012. Padua, Mary G. "This Way, Shanghai: Gubei Pedestrian Promenade." Landscape Architecture Magazine, Vol. 102, Issue #12, pp 54-65

Roes, Maggie, Taylor, Ken. "New Cultural Landscapes", Chapter "New Cultures and Changing Urban Cultures - Gubei Pedestrian Promenade, Routledge, to be published

Milton Street Park | Completed 2015

Los Angeles, California

Role: Lead Designer / Principal-in-Charge

After a six year process beginning with intensive community engagement and a complex permitting and design endeavor, Milton Street Park is the first landscape project of its scale to be built atop Los Angeles' storm channels. Previously a levee made of compacted earth and concrete, the site served one function: to protect the adjacent neighborhood from seasonal flooding. The completed design unites the community's calls for safety, visibility, openness, and beauty—all embedded in an ecologically resilient, 21st-century urban park. Ying-yu led the installation of aesthetic and ecological planting designs that clean and detain stormwater. Serving double duty as a performative infrastructure and a neighborhood park, the terraced walkways and planting beds cleans the urban runoff before entering Ballona Creek, while linking the daily routines of the community to the urban ecology in their backyard. Porous paving, native planting, recycled materials, stormwater retention, promotion of alternative transportation, and adaptive reuse of infrastructure are unified through Ying-yu's design.

Palisades Park | Completed 2016

Santa Monica, California.

Role: Lead Designer

Ying-yu proposed native California plant palettes that were specifically chosen to withstand the salty winds of the Pacific Ocean, as well as possible drought conditions in this historic park restoration project. Palisades Park is a long-loved public space atop the bluffs of Santa Monica, with panoramic views overlooking the Pacific Ocean. Adjacent to the world-famous Santa Monica Pier, the landscape plant beds had been compacted over time to the point where no plants survived.

Palisades Park was a case in point where sculptural plant installations and a simple fencing strategy influenced the tourists, residents, and recreational users of the park to interact with public space in a totally different way. Ying-yu led the planting design in cooperation with the City of Santa Monica, helping to devise a durable planting and fencing strategy that would discourage non-permitted gathering and preserve the park's natural amenities. Three parcels of land near this high-profile location adjacent to the iconic Santa Monica Pier has been planted with agave, aloe, and other drought-tolerant species. The spikey shape of the plants discourage users from treading through the planting area, thereby alleviating the issue of compacting the soil.

Ying-Yu was instrumental in the design and implementation of Milton Street Park on the constructed levees of the Ballona Creek. She was invaluable in overcoming the challenge of accomplishing a park design that balances out-of-the-box ideas with the aesthetic of a traditional open space. She successfully developed a sustainable and innovative project that is the most forward-thinking open space and green street projects in Los Angeles. Her dedication and talent is truly admirable.

Ana Straabe,
Chief of Park
Development

Mountains Recreation and
Conservation Authority

Ying-yu Hung, ASLA

April 2012. Hung, Ying-yu. "Gubei Pedestrian Promenade, Shanghai." *Landscape Architecture China*, Issue #22, P158-163.

Dec. 2011. Hung, Ying-yu. "Giant Interactive Group Headquarters, Shanghai." *Landscape Architecture China*, Issue #20, P96-102.

Oct. 2011, "SWA Los Angeles Office: Interview with Ying-yu Hung." *Environment & Landscape Architecture of Korea (ELA)*.

2011. *Landscape Infrastructure: Case Studies by SWA*. Basel: Birkhäuser. Waldheim, Charles, Ying-yu Hung, Gerdo Aquino, et al.

WORK EXPERIENCE

January 2011-Present

Managing Principal, SWA

June 2007-December 2010

Principal, SWA

November 2001-May 2007

Associate, SWA

March 1997-October 2001

Staff, SWA

1994-1997 Landscape Designer, Karen Aitken Associates

1989-1992 Designer, Sally Swanson Associates

ACADEMIC AFFILIATIONS

2007-Present

Adjunct Assistant Professor for the School of Architecture, University of Southern California

2013-2014

Design Critic in Landscape Architecture, Harvard University, Graduate School of Design

2013-2015

Professional Advisory Board, Clemson University

Gubei Pedestrian Promenade | Completed 2009

Shanghai, China

Role: Lead Designer / Principal-in-Charge

Part sidewalk, part neighborhood, part green lung, this project represents a return to the mixed-use nature of alleyways in the historic districts of Shanghai. The Gubei Pedestrian Promenade is a rare example of repurposing a vehicular road to become a pedestrian-only sanctuary for 17,000 residents and 1,100 newly planted trees. Centrally located in the densely populated Gubei District, the promenade provides a framework for the interconnected social ecologies in these progressive neighborhoods. Ying-yu led the design with the goal of unifying neighborhoods through the vivid planting palette, pavement patterns that cue the visitor's movement and opportunities for pause, and seating areas that invite public gathering and social interaction. The resulting design purposefully gives little differentiation between indoor and outdoor spaces, putting into form the notion of an 'outdoor living room' for public and civic engagement amidst the hustle and bustle of cosmopolitan Shanghai. Gubei Pedestrian Promenade has the potential to become a catalyst for future development in China that can inspire other developers and public agencies to see the value of such an urban amenity- which not only benefits the public, but elevates the real estate value of the entire district.

Summary by Chapter President

In conclusion, it is with wholehearted support that the Southern California Chapter of the American Society of Landscape Architects recommends the election of Ying-yu Hung to the Council of Fellows.

Ying-yu is an exceptional design talent, dedicated to excellence, as exhibited through her history of award-winning projects. She continually demonstrates the best of the profession of landscape architecture and better the lives of the communities in which she works at the regional, national and international levels.

Yung-yu's commitment and enthusiasm for the profession of landscape architecture is evident in her exemplary work, therefore it is with great honor to nominate Ying-yu Hung to the Council of Fellows.



Duane Border, ASLA

President, ASLA Southern California Chapter